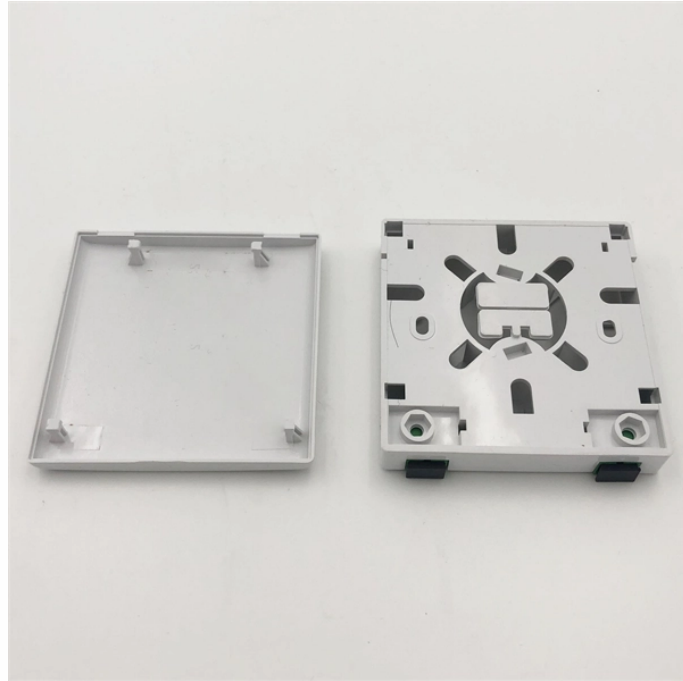


## Worst-case model and size of distribution box



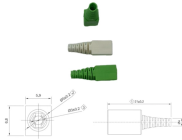
## Worst-case model and size of distribution box



WORST definition: 1. superlative of bad: of the lowest quality, or the most unpleasant, difficult, or severe: 2. the.... [Learn more.](#)



The results underscore the importance of the proposed model in safeguarding capital and reducing exposure to extreme risks, thus outperforming ...



The results underscore the importance of the proposed model in safeguarding capital and reducing exposure to extreme risks, thus outperforming other strategies documented in the literature.



Choosing the right combination of distribution cycle and assurance level is crucial to ensure your product and packaging system will withstand the distribution process and arrive intact to the end user.



Feasibility testing becomes a valuable tool in discerning whether the largest or smallest device poses the worst-case scenario. Although both shipping options are common, the small parcel ...



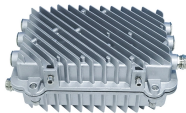
This study proposes a model that integrates facility location, relief item distribution, and evacuation operations while accounting for critical social parameters such as demographic ...



Abstract In package-handling facilities, boxes of varying sizes are used to ship products. Improperly sized boxes with box dimensions much larger than the product dimensions create wastage and ...



Worst is used to form the superlative of compound adjectives beginning with "bad" and "badly." For example, the superlative of "badly-affected" is "worst-affected."



This study explores the mathematical intricacies of EVaR and its worst-case counterpart, providing a comprehensive framework for their integration into the portfolio optimization models.



In order to solve the VVO problem for a forthcoming time horizon, it is necessary to predict some parameters such as load demand and renewable energy production. The prediction of these ...



The adjective worst describes the thing that is the least good, like this awful pizza, the worst we've ever had in our lives. Worst means "the least favorable outcome."



The meaning of WORST is most corrupt, bad, evil, or ill. How to use worst in a sentence.



The absolute worst-case performance ratio for an algorithm is defined as On the other hand, the asymptotic worst-case ratio is defined as Equivalently, is the smallest number such that there exists ...



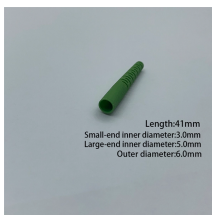
In this pa-per, we demonstrate that worst-case distribution shifts identified by traditional average accuracy-based metrics fundamentally differ from those for the downstream decision task at hand.



Some quality systems also call for consideration of worst-case seal strength, worst-case distribution simulation, and worst-case shipping configuration (i.e., 1 pack vs. 5 pack). The packaging ...



There are 17 meanings listed in OED's entry for the word worst, two of which are labelled obsolete. See "Meaning & use" for definitions, usage, and quotation evidence.



The term "worst" is an adjective used to describe something that is of the lowest quality, degree, or standard among others in a particular category. It refers to the most unfavorable or undesirable ...



The following tests/device characteristics have provided data in order to find worst case conditions for parameters associated with frequency response analysis.



In order to solve the VVO problem for a forthcoming time horizon, it ...

## Contact Us

For more information, pricing, or custom data center solutions, please contact us:

Website: <https://www.yoahorroenergia.es>

Email: [hello@yoahorroenergia.es](mailto:hello@yoahorroenergia.es)

Phone: +233 54 318 7269

Address: Plot 28, Spintex Road, Accra, Greater Accra, Ghana

This document is for informational purposes only. Specifications subject to change without notice.

