

## Working Principle of Agilent Single-Mode Spectrometer



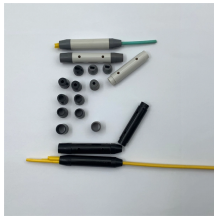
## Working Principle of Agilent Single-Mode Spectrometer



Ultra-fast ion polarity switching lets you obtain both positive and negative spectra, providing maximum information from a single injection—even for narrow LC peaks. Faster injection-to-injection cycle ...



The foundation for understanding the operation of a triple quadrupole mass spectrometer is the operation of a single quadrupole mass spectrometer. Therefore, an explanation of the workings of a ...



The Agilent 6120, 6130 and 6140 LC/MS models allow you to acquire multiple types of data during a single analysis. Within a single analytical run, you can choose alternating positive and negative ...



Liquid chromatography-mass spectrometry (LC-MS) is an analytical chemistry technique that combines the physical separation capabilities of liquid chromatography (or HPLC) with the mass analysis ...



SIM mode is significantly more sensitive than scan mode but provides information about fewer ions. Scan mode is typically used for qualitative analyses or for quantitation when analyte masses are not ...



In scan mode, the mass analyzer monitors a range of mass-to-charge ratios. In SIM mode, the mass analyzer monitors only a few mass-to-charge ratios. SIM mode is significantly more sensitive than ...



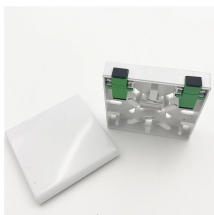
**SIM Mode** In the scan mode, the instrument detects signals over a mass range (e.g. from 50–2000 m/z) during a short period of time (e.g. 2 sec). During this scan period, the MS electronics sequentially ...



In a single-beam system, the light from the monochromator passes through the sample and then to the detector. This simple design means less optical components are used, and it makes it possible to ...



The Agilent 5977B GC/MSD is a single quadrupole, building on a long track record of innovation, the High Efficiency Source (HES) and Inert Plus Extractor EI source maximize the number of ions that ...



The Agilent 6470 Triple Quadrupole LC/MS system is at the forefront of robustness, reliability and accuracy, which makes it a perfect option for many applications, including peptide quantitation, food ...



When running the instrument in EI mode, you can select which filament in the ion source is active since sometimes one source gives better results than the other.

## Contact Us

For more information, pricing, or custom data center solutions, please contact us:

Website: <https://www.yoahorroenergia.es>

Email: [hello@yoahorroenergia.es](mailto:hello@yoahorroenergia.es)

Phone: +233 54 318 7269

Address: Plot 28, Spintex Road, Accra, Greater Accra, Ghana

This document is for informational purposes only. Specifications subject to change without notice.

