

Wiring of the distribution box is routed along the ceiling



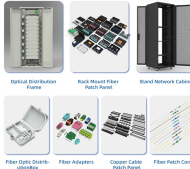
Overview

Cables are routed on the ceiling when it is impractical or impossible to route cables close to the floor or wall. Whether in a home or an industrial facility, this box keeps your electrical setup organized, functional, and efficient. However, the key to. The void above a suspended ceiling, which accommodates the tension wires or other means by which the grid is suspended from the building structure, is commonly used for the routing of wiring systems and non-electrical services, such as pipework and ductwork.



Wiring of the distribution box is routed along the ceiling

An Extensive Library of Self-Developed Products



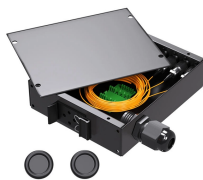
This guide summarises the requirements regarding the installation of cables concealed under a floor or above a ceiling; and within a wall or partition. Note: This guide does not cover all of the requirements ...



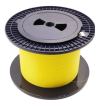
Certain main grid ceiling runners will be energized from a nearby power server module that provides low voltage to supply specific low voltage luminaires and ...



Learn how to install a distribution box safely and correctly. Covers wiring, placement, standards, and expert tips for a compliant setup.



Certain main grid ceiling runners will be energized from a nearby power server module that provides low voltage to supply specific low voltage luminaires and devices mounted in the ceiling.



Installing safe, orderly electrical boxes and cables is made easy by following the recommended electrical codes.



Solution: Ensure that the distribution box is reliably grounded, and the grounding wire should have sufficient cross-sectional area and be connected to the grounding network.



Over areas, other than public streets, alleys, roads, and driveways, subject to vehicular traffic other than truck traffic. Over residential property and driveways. Over commercial areas subject to pedestrian ...



The void above a suspended ceiling, which accommodates the tension wires or other means by which the grid is suspended from the building structure, is commonly used for the routing ...



How can cables be routed on the ceiling? A common method is to use cable trays, which are installed on the ceiling and act as open structures to accommodate cables. These routes allow for organised ...



Learn how to wire a distribution box step by step! This video shows real on-site footage of electrical installation, demonstrating safe and standardized wiring methods used by professionals.



Drilling too many holes can weaken the joists and cause structural damage. For long perpendicular runs it would be preferable to run along the main support beams and then parallel along the joist to the ...

Contact Us

For more information, pricing, or custom data center solutions, please contact us:

Website: <https://www.yoahorroenergia.es>

Email: hello@yoahorroenergia.es

Phone: +233 54 318 7269

Address: Plot 28, Spintex Road, Accra, Greater Accra, Ghana

This document is for informational purposes only. Specifications subject to change without notice.

