

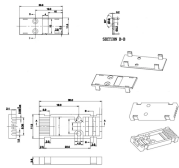
Wiring of main distribution box main junction box



Wiring of main distribution box main junction box



These three wires enter the meter box and then connect to the main panel. In the following tutorial, we will show how to wire 120V single-phase and 240V split-phase circuit breakers and loads inside a ...



Wiring Direction: Wiring between the main circuit breaker and each branch circuit breaker in the box generally goes on the left, and the wiring out of the distribution box generally goes on the ...



In this video, we'll walk you through the process of wiring a home distribution box with a detailed connection diagram.



Master safe electrical splicing with our detailed guide. Understand wire types, secure connections, and ensure code-compliant circuit testing.



Learn how to properly wire a junction box with this wiring diagram. Follow step-by-step instructions for a safe and efficient electrical installation.



Hey, in this article we are going to see the Single Phase Distribution Box Wiring Diagram and Connection Procedure. A distribution board or distribution box is where the main power supply is ...



Learn how to read and understand a main electrical panel wiring diagram to troubleshoot and make repairs in your home or business.



A junction box provides a code-approved place to house wire connections, whether for outlets, switches, or splices. Here's how to install one.



Reliable cable distribution boxes ensure safe, efficient power management for residential, commercial, and industrial systems. Learn installation and safety tips.



Learn how to read and understand a wiring diagram for a junction box. Find out how to properly connect and troubleshoot electrical connections.

Contact Us

For more information, pricing, or custom data center solutions, please contact us:

Website: <https://www.yoahorroenergia.es>

Email: hello@yoahorroenergia.es

Phone: +233 54 318 7269

Address: Plot 28, Spintex Road, Accra, Greater Accra, Ghana

This document is for informational purposes only. Specifications subject to change without notice.

