

Wiring bend in the distribution box



Overview

6 (A) provides minimum wire-bending space dimensions at terminals and minimum width of wiring gutters. 6 (A) applies where conductors do NOT enter or leave the enclosure through the wall opposite their terminals. Welcome to our comprehensive animated guide on home distribution wiring connection diagrams! In this video, we'll walk you through the essentials of wiring your home for electricity, ensuring you understand every step of the process. Wiring Direction: Wiring between the main circuit breaker and each branch circuit breaker in the box generally. This experiment focuses on the wiring and installation of a distribution box (DB), aiming to equip students with practical skills in creating wiring diagrams and performing installations. This specification shall be used in conjunction with the latest revision of the. Distribution Board or DB is an electricity supply system or a common enclosure that distributes the electrical power feed into subcircuits. It includes isolator, RCCB (Residual current circuit breaker) or RCD (Residual-current device) devices, protective fuses or MCB's (Miniature Circuit Breaker).

Wiring bend in the distribution box



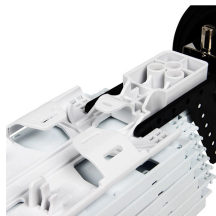
NEC Table 312.6 (A) provides minimum wire-bending space dimensions at terminals and minimum width of wiring gutters. Table 312.6 (A) applies where conductors do NOT enter or leave the enclosure ...



This document represents the minimum requirements and specifications for the installation of an electrical underground residential distribution system to be transferred to Oncor Electric Delivery ...



How to wire a DB – Distribution Board Wiring
Distribution Board or DB is an electricity supply system or a common enclosure that distributes the electrical power feed into subcircuits.



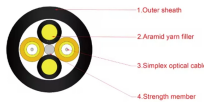
Learn how to install a distribution box safely and correctly. Covers wiring, placement, standards, and expert tips for a compliant setup.



In this video, we'll walk you through the essentials of wiring your home for electricity, ensuring you understand every step of the process.



Trim every wire that comes into that box to about 7" length. That allows you to fold the wire into the box with one 180-degree bend.



Trim every wire that comes into that box to about 7" length. That allows you to fold ...



Wiring Direction: Wiring between the main circuit breaker and each branch circuit breaker in the box generally goes on the left, and the wiring out of the distribution box generally goes on the ...



This experiment focuses on the wiring and installation of a distribution box (DB), ...



Larger bend radii shall be considered for conduit bends, sheaves, or other curved surfaces around which the cable may be pulled under tension while being installed, due to sidewall bearing pressure limits ...



The only service available will be 120/208 V three-wire single-phase or four-wire three-phase. If the lighting demand for the building exceeds 15 kilowatts, a four-wire three-phase service must be ...



This experiment focuses on the wiring and installation of a distribution box (DB), aiming to equip students with practical skills in creating wiring diagrams and performing installations. Students utilize ...

Contact Us

For more information, pricing, or custom data center solutions, please contact us:

Website: <https://www.yoahorroenergia.es>

Email: hello@yoahorroenergia.es

Phone: +233 54 318 7269

Address: Plot 28, Spintex Road, Accra, Greater Accra, Ghana

This document is for informational purposes only. Specifications subject to change without notice.

