

Why some fluorescent tubes do not require a starter



Overview

Modern fluorescent fixtures equipped with electronic ballasts do not use a separate starter. These newer designs, found in many T8, T5, and compact fluorescent lamps (CFLs), have integrated circuits that handle the starting and running of the lamp, eliminating the need for a. In traditional fluorescent lighting systems that use magnetic ballasts, a starter is necessary to provide the high-voltage pulse required to ionize the gas inside the tube. Without a starter, the light will not turn on. Electronic ballasts are far more efficient and do not have starters, but wire wound ballasts are around 60 to 80 lumen per watt and very voltage dependent. The switch opens and closes until the fluorescent tube 'strikes' and lights-up. The starter is a small cylindrical device that helps the lamp light up by providing a brief surge of electricity to ionize the gas inside the tube.

Why some fluorescent tubes do not require a starter



The starter is implanted together with a conventional ballast as part of a fixture in which your fluorescent tube is placed. You don't need a starter when the tube works with an electronic ballast.



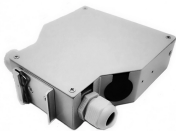
Some modern fluorescent lights do work without a starter because they come pre-equipped with a ballast that has extra windings. Most new fluorescent fixtures are either rapid-start or ...



Some modern fluorescent lights do work without a starter because they come pre-equipped with a ballast that has extra windings. It constantly supplies a small amount of voltage to ...



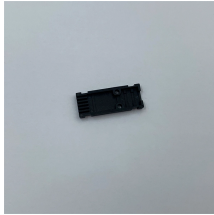
So the main reason is, electronic ballast can automatically create a high voltage across the tube light at the starting time to ionize the gas inside the tube light and automatically reduce the ...



Some modern fluorescent lights do work without a starter because they come pre-equipped with a ballast that has extra windings. It constantly supplies a small amount of voltage to give heat to the ...



A defective starter can result in the fluorescent tube no longer igniting or flickering. Due to their design, CCGs are also subject to natural wear and tear, resulting in a loss of power and increasing energy ...



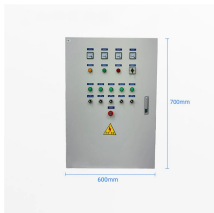
Please note that LED tubes are supplied with their own special starter - which is essentially a circuit which bypasses the function that a normal fluorescent starter would perform (LED tubes do not need ...)



Modern fluorescent fixtures equipped with electronic ballasts do not use a separate starter. These newer designs, found in many T8, T5, and compact fluorescent lamps (CFLs), have ...



Some modern fluorescent lights do work without a starter because they come pre-equipped with a ballast that has extra windings. It constantly ...



Do these fittings actually have a starter? If so, where is it likely to be, and what is it likely to look like? If it does not have a starter, and replacing the tubes has no effect, what is likely to be the ...



In conclusion, a fluorescent light can work without a starter, but it depends on the type of ballast used in the lighting fixture. Traditional magnetic ballasts require a starter to provide the high ...

Contact Us

For more information, pricing, or custom data center solutions, please contact us:

Website: <https://www.yoahorroenergia.es>

Email: hello@yoahorroenergia.es

Phone: +233 54 318 7269

Address: Plot 28, Spintex Road, Accra, Greater Accra, Ghana

This document is for informational purposes only. Specifications subject to change without notice.

