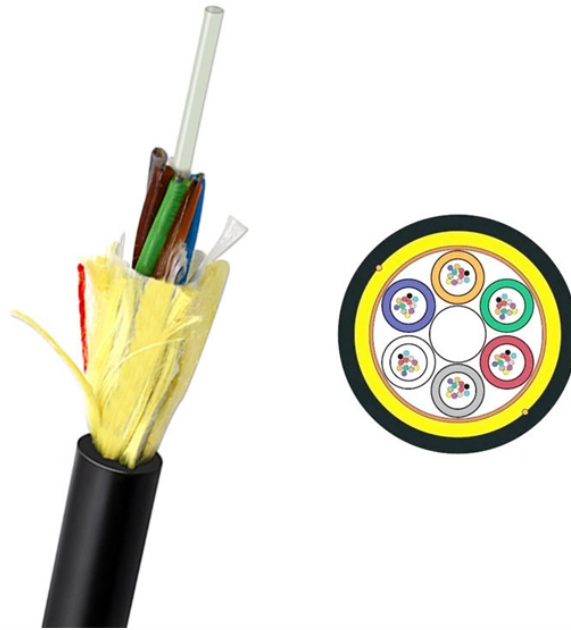


Why is the 10kV busbar not grounded when the 35 busbar is grounded



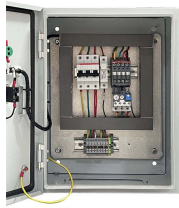
Overview

The answer to the initial question is “no” in any panel that is not the main service disconnect. This separation is achieved by ensuring the neutral bus bar is isolated, or “floating,” meaning it is mounted on insulated standoffs with no electrical connection to the metal. In 10kV power distribution systems, the proper setup of an earthing switch (or grounding switch) is critical. This prevents accidents caused by. Static grounding is often used in areas where the discharge (arcing) of the voltage buildup (static) can cause dangerous or undesirable conditions. A threaded hub (upper right) provides secure bonding to metal enclosures.

Why is the 10kV busbar not grounded when the 35 busbar is grounded



Can a neutral and ground share the same busbar in a sub panel that has a service disconnect? Short answer - NO!



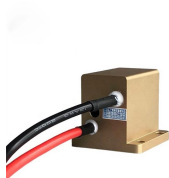
First, the system voltage with respect to ground is fixed by the phase-to-neutral winding voltage. Because parts of the power system, such as equipment frames, are grounded, and the rest of the ...



Understanding why neutral and ground separation matters in a subpanel can prevent shock hazards, nuisance tripping, and inspection failures. Whether you are upgrading a panel, ...



Generally, the busbar side of 10kV switchgear does not have a dedicated earthing switch. When maintenance is required on the busbar itself or equipment connected to that busbar section, ...



Dangerous voltage from a ground fault won't be removed from metal parts, metal piping, and structural steel if the service disconnect enclosure isn't connected to the service neutral conductor.



With this in mind, consider the case of a grounding bus bar in the event of a fault current. There will be a voltage rise on the bus bar proportional to the impedance of the conductor from the ...



Once the bus bar is installed and all ground wires are connected, test the system to ensure it is properly grounded. This can be done using a grounding tester, which measures the ...



The question of whether neutral and ground wires can share the same bus bar is a common source of confusion. A bus bar is a rigid strip of metal, usually copper or aluminum, that acts ...



In panelboard systems, this is often a green screw located in the grounded conductor busbar, which must be tightened down to make good contact with the enclosure.



Understanding why neutral and ground separation matters in a subpanel can prevent shock hazards, nuisance tripping, and inspection failures. ...

Contact Us

For more information, pricing, or custom data center solutions, please contact us:

Website: <https://www.yoahorroenergia.es>

Email: hello@yoahorroenergia.es

Phone: +233 54 318 7269

Address: Plot 28, Spintex Road, Accra, Greater Accra, Ghana

This document is for informational purposes only. Specifications subject to change without notice.

