

Why connect a switch to fiber optic cable



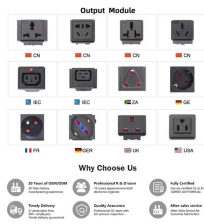
Overview

The switch receives data packets from one input fiber optic cable and forwards them to the appropriate output cable based on their destination addresses. It works much like a traffic cop directing vehicles at an intersection, ensuring a smooth flow of data between different points in. In this article, we'll explain how to connect multiple Ethernet switches using fiber optic cables and the equipment required for this to work. Network topology refers to the way in which the links and nodes of a network are arranged in relation to each other. Always integrate duplex (two strand) fiber optic cabling or higher strand counts. Most modern SFP transceiver modules. Fiber optic cabling is increasingly used to connect network switches and other datacom equipment, especially in long-distance and mission-critical applications.

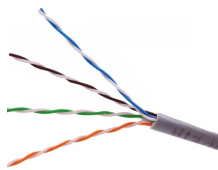
Why connect a switch to fiber optic cable



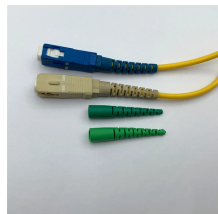
Definition of why adverb in Oxford Advanced American Dictionary. Meaning, pronunciation, picture, example sentences, grammar, usage notes, synonyms and more.



A: An SFP switch accepts Small Form-Factor Pluggable (SFP) modules, enabling fiber optic and Ethernet connections and offering better flexibility and scalability than traditional wired ...



The meaning of WHY is for what cause, reason, or purpose. How to use why in a sentence.



This guide explains the key differences between RJ45 and fiber, why they cannot connect directly, and how to integrate them properly in enterprise or data center environments.



This article aims to provide a comprehensive understanding of how network switches are connected to fiber optic cables, the types of fiber optic connectors used, and the configuration ...



Some switches have fiber transceiver ports built in and some require an add-on module to insert fiber transceivers. Some switches don't accommodate fiber.



Fiber optic cabling is increasingly used to connect network switches and other datacom equipment, especially in long-distance and mission-critical applications.



"Why?" A question as old as humanity, and as relevant today as ever. Explore the history, meaning, and necessity of the question that drives discovery from toddlers to theoretical physicists.



You use why in questions when you ask about the reasons for something. Why hasn't he brought the bill? Why didn't he stop me? Why can't I remember the exact year we married?



When we ask for reasons in speaking, we can use the phrase why is that? In informal conversations we often say why's that?: ...



Connecting Network Switches via Fiber As network speeds continue to advance from 1 Gb and beyond, connecting network switches via copper limits data speed and the ability to upgrade in the future.



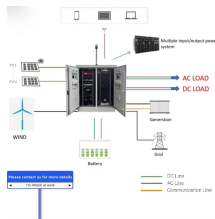
Why definition: For what purpose, reason, or cause; with what intention, justification, or motive.



In addition, fiber cables can transmit data over several kilometers without signal degradation, making them ideal for connecting switches in large campus networks and between ...



In summary, a fiber optic switch is an essential component of a fiber optic network, enabling efficient management of data traffic and ensuring fast and reliable communication.



Switch optical port intercommunication means that the optical fiber ports of two switches are connected to each other to achieve the purpose of network connection.



This guide will walk you through the process of connecting a switch to a fiber optic network, covering the necessary components, steps, and considerations to ensure a smooth setup.

Contact Us

For more information, pricing, or custom data center solutions, please contact us:

Website: <https://www.yoahorroenergia.es>

Email: hello@yoahorroenergia.es

Phone: +233 54 318 7269

Address: Plot 28, Spintex Road, Accra, Greater Accra, Ghana

This document is for informational purposes only. Specifications subject to change without notice.

