

# Where is the relay protection system located



## Overview

The fault can be located upstream or downstream of the relay's location, allowing appropriate protective devices to be operated inside or outside of the zone of protection. Overview In, a protective relay is a device designed to trip a when a is detected. The first protective relays were electromagnetic devices, relying on coils operating on moving par. Electromechanical protective relays operate by either, or. Unlike switching type electromechanical with fixed and usually ill-defined operating voltage thresholds. Electromechanical relays can be classified into several different types as follows: "Armature"-type relays have a pivoted lever supported on a hinge or knife-edge pivot, which carries a moving contact. These relays may.

## Where is the relay protection system located



Schneider Electric USA. Discover our range of products in Protection Relays: Sepam series 80, PowerLogic™ P7 Protection and Control Platform, PowerLogic™ P3 Protection ...



A protective relay is basically an electrical device that detects a fault in a power system and initiates the operation of the circuit breaker to isolate the defective section or component from ...



The “protection zone” in an electrical power system is defined as the specific region within the system that is monitored and protected from faults by protective relays. This zone is established ...



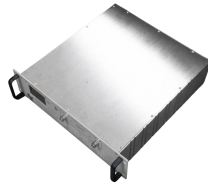
The fault can be located upstream or downstream of the relay's location, allowing appropriate protective devices to be operated inside or outside of the zone of protection.



Protection is needed to detect electrical faults and abnormal operating conditions. Protection is also needed for protecting people and property around the power network. The protected zone is the part ...



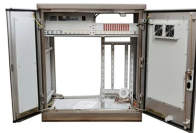
Protective relays and devices have been developed over 100 years ago to provide “lastline” of defense for the electrical systems. They are intended to quickly identify a fault and isolate it so the balance of ...



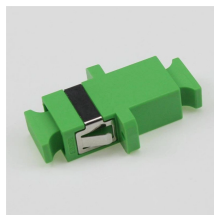
There are several types of drawings used to document and communicate details of the protection system to those who need to understand it for the purposes of construction, installation, ...



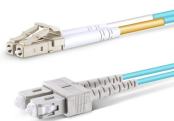
What are Protective Relays, or Protection Relays? Protective relays are used in industrial power generation and supply systems to open and isolate branch ...



A zone of protection in electrical system protection refers to the area or segment of an electrical power system that is protected by a particular protective relay. The protective relay is ...



Understanding Protection Relays - 50, 50N, 51, 51N Learn about Understanding Protection Relays and how they prevent damage to electrical systems due to overcurrent and faults.



What are Protective Relays, or Protection Relays? Protective relays are used in industrial power generation and supply systems to open and isolate branch circuits in the case of excessive current. ...



The SEL-351 Relay has built-in Ethernet and IEEE C37.118 synchrophasors, and is ideal for directional overcurrent applications. Optional Mirrored Bits® communications and power quality monitoring add ...



Protective relays monitor electrical parameters such as current, voltage, and frequency to detect anomalies in the system. When a fault, such as an overcurrent, undervoltage, or short circuit, is ...

## Contact Us

For more information, pricing, or custom data center solutions, please contact us:

Website: <https://www.yoahorroenergia.es>

Email: [hello@yoahorroenergia.es](mailto:hello@yoahorroenergia.es)

Phone: +233 54 318 7269

Address: Plot 28, Spintex Road, Accra, Greater Accra, Ghana

This document is for informational purposes only. Specifications subject to change without notice.

