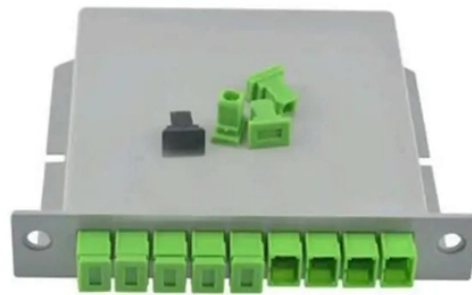


Where is the operator s optical distribution box located



Overview

They are located on the user side, providing various ports for connecting to user terminals. An ODN is composed of passive optical components, such as optical fibers, and passive optical splitters. It provides optical channels between the OLT and ONTs. The MODB Multi Operator Distribution Box 48FO is a high-capacity, multi-operator fiber distribution enclosure widely used in FTTH building networks. This guide provides the full installation workflow for both the Client Module (Riser Cable Installation) and the Operator Module (Feeder Cable. In the complex architecture of fiber optic networks, the Optical Distribution Frame (ODF) serves as the linchpin for organizing, protecting, and distributing optical signals. Whether in data centers, telecom central offices, or enterprise network rooms, ODFs enable efficient fiber management. Gigabit Passive Optical Network (GPON) is a point-to-multipoint (P2MP) network that uses a combination of active transmission equipment and passive cable components to provide network connectivity to end user devices. Although this guide has been prepared with every precaution to ensure accuracy, BD Biosciences assumes no liability for any errors or omissions, nor for any.

Where is the operator s optical distribution box located



The Optical Distribution Frame (ODF) is the network frame where the fibers from the outdoor cables are terminated and become available to interface with the active equipment or patching.



Learn how to efficiently manage and distribute optical cables using a fiber distribution box. Explore protective sheath and organized distribution.



Enables a quick search of all switch configurations, hardware, and software versions to find the group of switches that require configuration change or investigation. To search your network ...



Rack-mounted fiber optic distribution boxes are designed to be installed in standard 19-inch equipment racks. These boxes are commonly used in data centers and telecommunication ...



An ODN is composed of passive optical components, such as optical fibers, and passive optical splitters. It provides optical channels between the OLT and ONTs. It interconnects the OLT and ONTs and is ...



Discover the MODB Multi Operator Distribution Box 48FO installation guide from leading manufacturer Spring Optical. OEM/ODM supported for FTTH building networks.



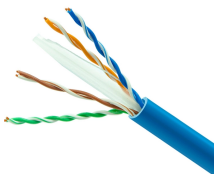
In the complex architecture of fiber optic networks, the Optical Distribution Frame (ODF) serves as the linchpin for organizing, protecting, and distributing optical signals.



Located on the sample line just before the pinch valve, it triggers the pinch valve to close, cutting off sample flow and preventing bubbles from entering the flow cell.



Based on their structure, ODFs are classified into three main categories: Wall mount ODF, Floor mount ODF, and Rack mount ODF. Typically designed like a small box, a wall mount ODF is ...



The Multi-Operator MDU Distribution Box (MMDB) allows the connection of several operators to a shared internal building network. This MMDB can be installed in the building basement.

Contact Us

For more information, pricing, or custom data center solutions, please contact us:

Website: <https://www.yoahorroenergia.es>

Email: hello@yoahorroenergia.es

Phone: +233 54 318 7269

Address: Plot 28, Spintex Road, Accra, Greater Accra, Ghana

This document is for informational purposes only. Specifications subject to change without notice.

