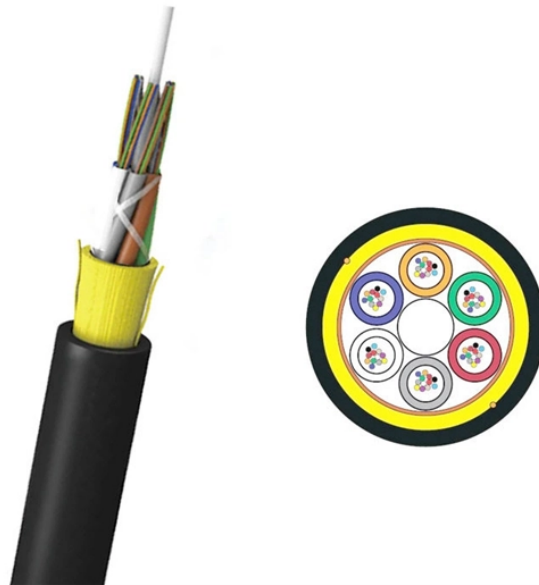


Where is the fiber optic cable plugged into the B end of the transceiver



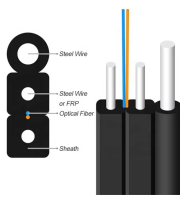
Overview

Remove the rubber safety cap from the end of the transceiver and cable, and insert the fiber cable into the transceiver. Since fiber optic links require a two-way - or duplex - connection, there is potential for errors in installation by connecting transmitter to transmitter or. To connect a fiber optic cable to SFP optical module, first ensure the SFP is fully inserted into the network port until it "clicks", then remove the dust caps from both the SFP and the LC fiber optic connector. Clean the fiber end face to avoid dust contamination, align the LC connector with the. They consist of a transmitter on one end of a fiber and a receiver on the other end.

Where is the fiber optic cable plugged into the B end of the transceiver



Page 15: Connect Fiber Optic Network Cables
Inserting an 100G SFP-DD Transceiver Module into a Module Socket
Module Socket Step 6 Firmly press the front end of the QSFP28 or SFP-DD ...



Method B uses Type B reversed MPO trunk cables with key-up connectors on both ends, so that the fiber located in Position 1 (Tx) arrives at Position 12 (Rx) at the other end.



To connect a fiber optic cable to SFP optical module, first ensure the SFP is fully inserted into the network port until it "clicks", then remove the dust caps from both the SFP and the LC fiber optic ...



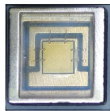
Fiber optic transceivers work to convert electrical signals from network devices into pulses of light, which travel through the cables and then back into electrical signals at the receiving end.



Remove the rubber safety cap from the end of the transceiver and cable, and insert the fiber cable into the transceiver. Warning: Do not leave the fiber optic transceiver exposed except ...



Cover the transceiver and the end of each fiber-optic cable connector with a rubber safety cap immediately after disconnecting the fiber-optic cables. By using your fingers, pull the ejector lever ...



It's a fairly simple solution; unplug the LC couplers on the TAPs' network ports A and B and reverse the polarity, only at the end connected to the TAP. If you were to reverse the polarity at ...



When you have a switch which has SFP ports, initially all slots are empty and we have to put copper or fiber transceivers on it as you need.



Fiber optic transmission systems (datalinks) all work similar to the diagram shown above. They consist of a transmitter on one end of a fiber and a receiver on the other end.



A duplex patch cord with A-B polarity carries a "straight-through" position, as seen in the example below. When facing an open port in the "Keyup" position, "B" will always be on the left and "A" will always be ...

Contact Us

For more information, pricing, or custom data center solutions, please contact us:

Website: <https://www.yoahorroenergia.es>

Email: hello@yoahorroenergia.es

Phone: +233 54 318 7269

Address: Plot 28, Spintex Road, Accra, Greater Accra, Ghana

This document is for informational purposes only. Specifications subject to change without notice.

