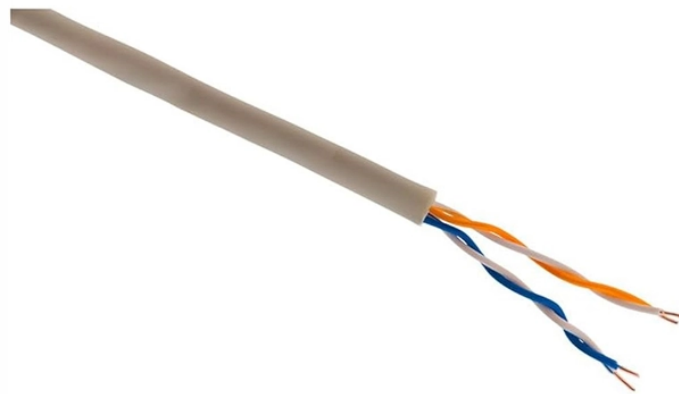


What size cable tray requires seismic-resistant cable trays



Overview

According to standards, seismic supports are mandatory when tray height exceeds 2 meters or when the weight is significant. The 200-width trays weigh approximately 25kg - while not the heaviest, we always install stabilizing brackets as a permanent safety measure. For example, in earthquake-prone regions like California, Japan, or parts of. In practical terms, the cable tray design team needs the project-specific seismic criteria, not just a vague statement that the building is in a seismic area. At a minimum, the cable tray designer should confirm: These inputs affect tray selection, brace layout, splice design, anchor demand, and. This appendix provides the design criteria for seismic Category I cable trays and their supports. plant safe shutdown earthquakes (1). Seismic restraints are not required for conduit that has been assigned a Component Importance Factor equal to 1.5, and whose trade size is 2. Our team of experts can help you select the best cable tray series for your.

What size cable tray requires seismic-resistant cable trays



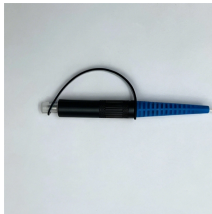
According to standards, seismic supports are mandatory when tray height exceeds 2 meters or when the weight is significant. The 200-width trays weigh approximately 25kg - while not the heaviest, we ...



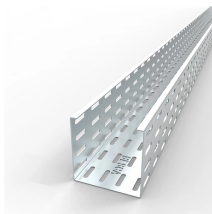
In conclusion, whether or not you need seismic braces for your cable trays depends on several factors, including local building codes, the importance of the cables being supported, ...



The seismic performance of a cable tray system depends just as much on the building connection as on the tray itself. Every hanger, trapeze, beam clamp, concrete insert, and post ...



Conduit greater than 2.5 inches (64 mm) trade size and attached to panels, cabinets or other equipment subject to seismic relative displacement, must be provided with flexible connections or designed for ...



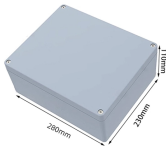
Eaton's B-Line series cable tray with TOLCO seismic bracing is the recommended total solution for your project. Our cable tray, bolted framing, and seismic bracing are approved as one system through ...



SIZE definition: the spatial dimensions, proportions, magnitude, or bulk of anything. See examples of size used in a sentence.



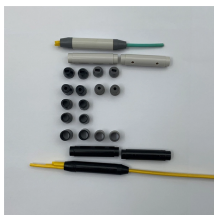
NEMA VE 1-2017 Specifies requirements for metal cable trays and associated fittings designed for use in accordance with the rules of Canadian Electrical Code, Part I and the National Electrical Code®



The size of something is how big or small it is. Something's size is determined by comparing it to other things, counting it, or measuring it.



Experience precise and real-size comparisons of people, objects, and more with SizeAll. Our interactive and user-friendly website allows you to view and compare the actual sizes of a wide range of items ...



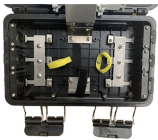
To investigate the seismic behavior and failure mechanism of the cable tray, a series of shaking table tests were conducted on a full-scale steel frame with a cable tray system enhanced by ...



The meaning of SIZE is physical magnitude, extent, or bulk : relative or proportionate dimensions. How to use size in a sentence.



Definition of size noun in Oxford Advanced American Dictionary. Meaning, pronunciation, picture, example sentences, grammar, usage notes, synonyms and more.



SIZE meaning: 1. how large or small something or someone is: 2. one of the standard measures according to which.... Learn more.



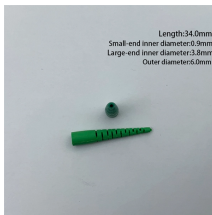
It's hard to imagine the canyon's size until you see it in person. You should have seen the size of the shark they caught!



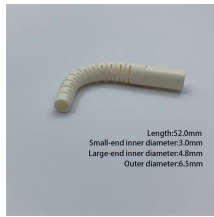
When cable trays have vertical drops of more than about 20 feet and flapping of the cables during an earthquake might cause pinching or cutting of the cables or impact with proximate fragile equipment, ...



Strap cables, either individually or in bundles, to the cable tray at a spacing equal to one half the support spacing to spread the seismic loads evenly to all restraint points.



This appendix provides the design criteria for seismic Category I cable trays and their supports. Seismic Category II cable trays and their supports are also designed utilizing the design criteria of this appendix.



The size and thickness of the cable tray components, such as the side rails and cross members, need to be carefully determined to ensure adequate strength. Larger and thicker components can generally ...

Contact Us

For more information, pricing, or custom data center solutions, please contact us:

Website: <https://www.yoahorroenergia.es>

Email: hello@yoahorroenergia.es

Phone: +233 54 318 7269

Address: Plot 28, Spintex Road, Accra, Greater Accra, Ghana

This document is for informational purposes only. Specifications subject to change without notice.

