

# What s wrong with the data not displaying at the front of the shelf



## Overview

In this video, I'll break down the 3 most common reasons this happens and show you how to fix it quickly:

- Source sheet deleted, unshared, or access removed
- Rows, columns, or report filters removed from your data source
- Values cleared out (not set to zero, but emptied)

I'll. In this video, I'll break down the 3 most common reasons this happens and show you how to fix it quickly:

- Source sheet deleted, unshared, or access removed
- Rows, columns, or report filters removed from your data source
- Values cleared out (not set to zero, but emptied)

I'll. On-shelf availability (OSA) is the percentage of a brand's listed SKUs that are physically present on the shelf, in the correct position, at the moment a shopper arrives—measured from the shopper's perspective, not the inventory system's. That definition draws a hard line between three different. The purpose of this article is to explain how to troubleshoot the issue of your data not displaying when importing it from a database to a shelf plan in DotActiv. Applicable Products: DotActiv Lite, DotActiv Pro, DotActiv Enterprise If you were to import data from a database to a shelf plan and. If you're not seeing the data that you expect, refresh for the latest data, check that you have the right running user, and verify your

dashboard data sources. If your dashboard data doesn't look as you expect, check the following: Running user: Remember that you're viewing the dashboard from the. Im assuming its an issue of object placement?

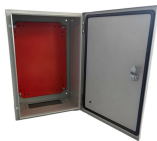
But it immediately crashes before I can do anything, so im going to have to guess a mod update is needed to fix this if at all possible, orrrrrrr i guess we have to start over. I posted it in another thread and it helped that guy out. What is Tableau Not Showing All Data?

You've connected your data, built your view in Tableau, and are ready to share your findings.

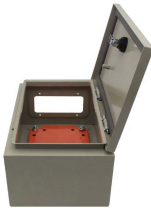
## What s wrong with the data not displaying at the front of the shelf



If you've ever opened a Smartsheet dashboard only to find the dreaded "Unable to Display Chart" error, you know how frustrating it can be ☹️. In this video, I'll break down the 3 most common...



Today when I tried to launch my save file from last night, it keeps saying "Shelf data not loaded properly". It is happening with all my saves now. I've uninstalled the game and installed it ...



Syndicated data can't tell you what's actually on the shelf right now across thousands of stores. That's where the measurement gap lives—and that's where image recognition can be ...

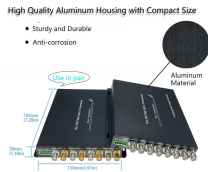


This week our Support team had a few reports where Chart Widgets that are based off of Reports are not displaying data to external collaborators, similar to what you're picturing above.



Equipped with a removable **Mounting Plate** inside the enclosure, enabling customized drilling and secure component mounting.

This guide will walk you through the most frequent reasons why Tableau might not be showing all your data and provide clear, step-by-step solutions to fix them.



Throughout the day, products are moved, removed, and misplaced. This can make shelves look untidy and product visibility poor, which not only affects the shopping experience but ...



Learn how to troubleshoot the issue of your data not displaying when importing it from a database to a shelf plan in DotActiv software.



There could be several reasons why data is displayed in the query editor preview but not in the data view. One possible reason could be due to the use of Direct Query mode. In Direct Query ...



You're Not Connected to A Database You Haven't Selected Your Data Fields Your Display Structure Is Not Pulling Through If your "Display Structure" is not pulling through, then your data will not import correctly. To correct this, you need to classify your products correctly within your database before beginning the import. Read this article on how to clean and classify your data. Should the above steps not work for you, please create a support ticket. DotActiv supp... See more on [powerbase.dotactiv](https://powerbase.dotactiv.com) Salesforce



If you're not seeing the data that you expect, refresh for the latest data, check that you have the right running user, and verify your dashboard data sources.



Maybe all the disks are assigned for another system (controller). If this is the case, you need to boot the controller, go to special boot menu, go to maintenance mode and runs a disk ...



Today when I tried to launch my save file from last night, it keeps saying "Shelf data not loaded properly". It is happening with all my saves now. ...

## Contact Us

For more information, pricing, or custom data center solutions, please contact us:

Website: <https://www.yoahorroenergia.es>

Email: [hello@yoahorroenergia.es](mailto:hello@yoahorroenergia.es)

Phone: +233 54 318 7269

Address: Plot 28, Spintex Road, Accra, Greater Accra, Ghana

This document is for informational purposes only. Specifications subject to change without notice.

