

What optical module should be used with Huawei S1724G-AC



Overview

A switch must use optical or copper modules that have been certified for use on Huawei switches. 3 S1700-28GFR-4P-AC Appearance Figure 5-4 shows the appearance of an S1700-28GFR-4P-AC. 7A Twenty-four 10/100/1000BASE-T Four. * Online Price may be wrong or outdated and can NOT be used as proof by anyone or any organization for any purpose. The S1700 uses high-performance hardware, which offers a wide array of features to help customers build secure, reliable, high-performance networks. The S1700 is easy to install and maintain, and is ideal for small-size and medium-size enterprises, Internet cafes, hotels, and schools. Include the. (Video) [Network Encyclopedia] What Is Stacking?

S1700&S2700 Series S1724G-AC: Access product manuals, HedEx documents, product images and visio stencils. An S1724G supports only AC power supply. For details, see the indicator description for S1700-8G-AC. 8°F every time the.

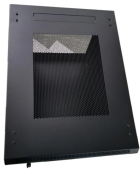
What optical module should be used with Huawei S1724G-AC



Unmanaged Switch, 24 x 10/100/1000Base-T ports, 48Gbps, 36Mpps, no any Layer 2/3 Features.



Indicators The indicator description for S1724G is the same as that for S1700-8G-AC. For details, see the indicator description for S1700-8G-AC.



Page 103 3 m and 10 m AOC cables GPON optical module (applicable in V200R012C00 and later versions) NOTE If a port uses a GPON optical module, other 10GE SFP+ optical ports cannot be used.



View online or download Huawei S1724G Manual.



Huawei switches must use optical modules that have been certified for use on Huawei switches. The jack next to the AC power socket is reserved for an AC terminal locking latch.



View and download Huawei s1724g manuals for free. S1700 Series instructions manual.



S1700& S2700 Series S1724G-AC: Access product manuals, HedEx documents, product images and visio stencils.



All S1700 ports provide Layer 2 wire-speed forwarding capabilities to ensure non-blocking packet forwarding. S1700 models provide optical and electrical GE uplink ports, which facilitate user access ...



A switch must use optical or copper modules that have been certified for use on Huawei switches. Non-certified optical or copper modules cannot ensure transmission reliability and may affect service ...



S1724G-AC V200R019C10 Switches: Access product manuals, HedEx documents, product images and visio stencils.

Contact Us

For more information, pricing, or custom data center solutions, please contact us:

Website: <https://www.yoahorroenergia.es>

Email: hello@yoahorroenergia.es

Phone: +233 54 318 7269

Address: Plot 28, Spintex Road, Accra, Greater Accra, Ghana

This document is for informational purposes only. Specifications subject to change without notice.

