

What is x0 in relay protection



What is x0 in relay protection



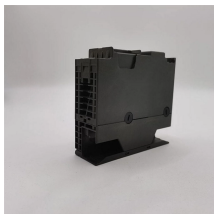
What is a Protection Relay? An electrical device designed to detect some specified condition in a power system, and then command a circuit breaker either to trip or ...



Protection relays are a very important part of electrical systems. They mostly play the role to prevent the circuits from overcurrent. Overcurrent causes a lot of problems due to thermal heating, ...



A protection relay is a crucial component of electrical systems that safeguard infrastructure, employees, and equipment from electric problems and malfunctions. It functions as a ...



Distance relays, also known as impedance relay, differ in principle from other forms of protection in that their performance is not governed by the magnitude of the ...



Relay protection is essential to ensure the stability, reliability, and safety of electrical power systems. In HV (High Voltage) and MV (Medium Voltage) substations, relay protection...



Protection is needed to detect electrical faults and abnormal operating conditions. Protection is also needed for protecting people and property around the power network. The protected zone is the part ...



The backup protection zone relays or elements are coordinated with the remote zone relays or elements and usually contain a coordination time delay. The backup zone may disconnect more power system ...



The protection and control devices in electrical equipment can be referred to by numbers, with appropriate suffix letters when necessary, according to the functions they perform.



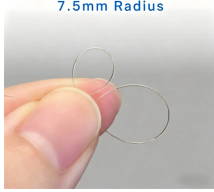
Zone settings in distance protection are critical for determining the relay's reach and selectivity in fault detection. Zones are configured based on line lengths and ...



What are Relay Word bits used for in SEL relays?
Questions?



Ratios are stated as "X" primary current to 5A i.e., 600:5 means that 600A of line current produces 5A of secondary current. There are two basic classes of current transformers: metering and relaying.



The relay must be able to discriminate (select) between those ...



The relay must be able to discriminate (select) between those conditions for which prompt operation is required and those for which no operation, or time delayed operation is required.



What is a Protection Relay? An electrical device designed to detect some specified condition in a power system, and then command a circuit breaker either to trip or to close in order to protect the integrity ...

Contact Us

For more information, pricing, or custom data center solutions, please contact us:

Website: <https://www.yoahorroenergia.es>

Email: hello@yoahorroenergia.es

Phone: +233 54 318 7269

Address: Plot 28, Spintex Road, Accra, Greater Accra, Ghana

This document is for informational purposes only. Specifications subject to change without notice.

