

## What is the main switch in a construction site electrical distribution box



### Overview

The main switch, or main breaker, controls the entire electrical supply to the distribution box. It's typically rated for the maximum current capacity of the electrical. A distribution box, also known as a distribution board, electrical panel, or breaker box, is an enclosure that houses electrical components responsible for distributing electricity throughout a building. This feature is crucial during maintenance activities or in case of emergencies. Circuit Breakers Among the most.

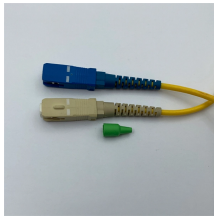
## What is the main switch in a construction site electrical distribution



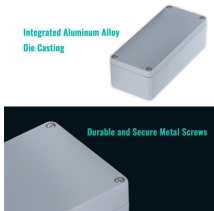
A switchboard is a component of an electrical distribution system which divides an electrical power feed into branch circuits while providing a protective circuit breaker or fuse for each circuit in a common ...



The Main Switchboard is the first electrical panel that connects the electricity and power to the site. The primary role of the panel is to distribute power to different areas of the site.



Main switchboards take in a large amount of electricity from a utility or generator and distribute it to smaller systems. They're typically found at the service entrance of a building or facility ...



The main switch, or main breaker, controls the entire electrical supply to the distribution box. This large switch allows you to disconnect all power to the building during emergencies or ...



Distribution switchboards, including the Main LV Switchboard (MLVS), are critical to the dependability of an electrical installation. They must comply with well-defined standards governing ...



The main breaker is a vital part of the system, acting as the disconnect switch for all the circuits in the box. It is usually located at the top of the panel and allows you to shut off power to the entire ...



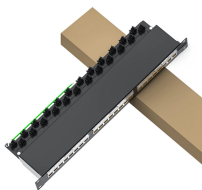
To understand how a construction site electrical distribution board works, it's useful to look at its main parts. Here are the components you'll typically find: Main Breaker: This is the heart of the system. It ...



Main switchboards take in a large amount of electricity from a utility or generator and distribute it to smaller systems. They're typically found at the ...



In Canadian service entrance panelboards the main switch or circuit breaker is located in a service box, a section of the enclosure separated from the rest of the panelboard, so that when the main switch or ...



Main Switch: This is the "master control" for the entire distribution box, allowing the entire system to be turned off or on. In an emergency, flipping this switch cuts power to all circuits ...



The main switch is the gateway to the entire electrical supply. Positioned at the forefront of the distribution board, it allows for the complete shutdown of electrical power.

## Contact Us

For more information, pricing, or custom data center solutions, please contact us:

Website: <https://www.yoahorroenergia.es>

Email: [hello@yoahorroenergia.es](mailto:hello@yoahorroenergia.es)

Phone: +233 54 318 7269

Address: Plot 28, Spintex Road, Accra, Greater Accra, Ghana

This document is for informational purposes only. Specifications subject to change without notice.

