

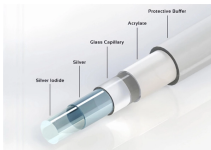
What is a relay protection malfunction



What is a relay protection malfunction



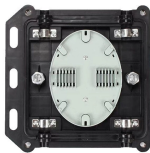
One approach to test the total protection system is to use primary injection techniques (see appendix H) that trigger protective relays and lockout ...



What is a Protection Relay? An electrical device designed to detect some specified condition in a power system, and then command a circuit breaker either to trip or to close in order to protect the integrity ...



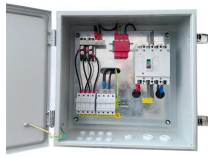
This protection function ensures the voltage stays within a safe range. If the system drifts outside that range, the relay flicks off and isolates the faulty section.



Protective relays exist precisely to make that determination. When they do it well, faults are contained, and systems recover. When they do it poorly, the result is nuisance tripping, cascading outages, or ...



Relay malfunctions are one of the leading contributors to nuclear reactor scrams. Operating experience has documented these failures over many years. Evaluation of the failure reports for common causes ...



Type tests are needed to prove that a protection relay meets the claimed specification and follows all relevant standards. Since the basic function of a protection relay is to correctly function under ...



One approach to test the total protection system is to use primary injection techniques (see appendix H) that trigger protective relays and lockout relay, trip circuit breakers, and initiate ...



However, like any complex piece of equipment, relays are prone to malfunctions. When such failures occur, they can lead to significant disruptions. For relay technicians, pinpointing the root cause of ...



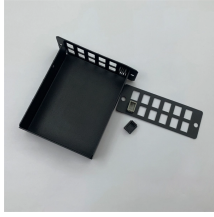
The fault can be located upstream or downstream of the relay's location, allowing appropriate protective devices to be operated inside or outside of the zone of protection.



What is a Protection Relay? An electrical device designed to detect some specified condition in a power system, and then command a circuit breaker either to trip or ...



To summarize, protection relays may face several common issues, including incorrect settings, faulty wiring, coordination problems, power quality disturbances, and firmware or software ...



An essential part of electrical systems, a protection relay is responsible for spotting anomalies such as voltage fluctuations, short circuits, and overcurrent.

Contact Us

For more information, pricing, or custom data center solutions, please contact us:

Website: <https://www.yoahorroenergia.es>

Email: hello@yoahorroenergia.es

Phone: +233 54 318 7269

Address: Plot 28, Spintex Road, Accra, Greater Accra, Ghana

This document is for informational purposes only. Specifications subject to change without notice.

