

What is a dual-input dual-output terminal box



Overview

Designed to handle up to 250V AC/DC at 30A max, this versatile module features dual input terminals for connecting one or two power supplies, enabling redundancy when needed. If your speakers are equipped with dual bi-wire / bi-amp binding posts, then you have the choice to connect them using the conventional method of a single set of wires to a single amplifier or you can choose an alternative method - either bi-wire (two sets of wires to a single amplifier) or bi-amp. The VIOX VOPV600-2/2 Solar Combiner Box is an advanced dual-string protection solution engineered for medium to large-scale PV systems. Operating at DC600V with a 2-input / 2-output configuration, it allows for the independent management of two separate solar arrays. This IP65-rated unit is. Versatile Compatibility: Compatible with a variety of speakers and audio systems, enhancing flexibility. Using these modules enables integration with a host of other building management and emergency systems, including access control systems, lifts, fire. © 2026 Connection Technology Center. CTC terminal junction box terminal blocks are available in single input and output, continuous output, dual input and output, and triaxial input and output configurations.

What is a dual-input dual-output terminal box



The module may be mounted in either a wall box, on a DIN rail, or inside any type of enclosure. Irrespective of the chosen mounting method, the address switch is both visible and accessible for ...



The EKDBS-PV2/2-IFS-1000 is a versatile 1000V DC combiner box engineered ...



This versatile 2-input, 2-output configuration provides essential protection and connection functions for medium to large-scale solar installations, enabling efficient power distribution from multiple solar ...



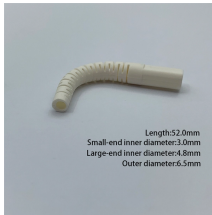
The EKDBS-PV2/2-IFS-1000 is a versatile 1000V DC combiner box engineered for sophisticated commercial and industrial solar photovoltaic systems requiring dual input and dual output ...



CTC terminal junction box terminal blocks are available in single input and output, continuous output, dual input and output, and triaxial input and output configurations.



Designed for easy installation and reliable performance, this dual input speaker terminal ensures secure connections while facilitating optimal sound transmission.



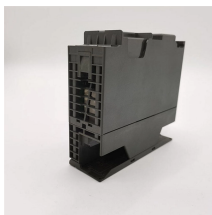
Designed to handle up to 250V AC/DC at 30A max, this versatile module features dual input terminals for connecting one or two power supplies, enabling redundancy when needed. It splits power into 12 ...



At your receiver or amplifier, connect the two cables to one pair of red and black output terminals for the left channel, and two speaker cables to the other pair of output terminals for the right channel.



installation Overview The MX220 Addressable Dual Input /Output Module is characterised as one input or output voltage-fre. relay and control module. The unit is normally used for triggering equipment ...



The di boxes for instruments prevents the flow of current, which cuts off the ground loop and eliminates noise. It also reduces noise caused by the use of long wires and cables.



Each input and output are individually addressed and controlled by the control equipment and provide a cost effective, compact solution for installations requiring multiple switching and / or monitoring at a ...



Designed for easy installation and reliable performance, this dual input speaker ...

Contact Us

For more information, pricing, or custom data center solutions, please contact us:

Website: <https://www.yoahorroenergia.es>

Email: hello@yoahorroenergia.es

Phone: +233 54 318 7269

Address: Plot 28, Spintex Road, Accra, Greater Accra, Ghana

This document is for informational purposes only. Specifications subject to change without notice.

