

What happens if a fiber optic patch cord is short



Overview

Selecting the appropriate cable length for fiber optic patch cables is crucial for maintaining optimal network performance. Incorrect cable lengths can lead to signal attenuation, which refers to the loss of signal strength as it travels through the cable. Unlike backbone cables, patch cords are frequently connected, disconnected, bent, and handled by technicians, making them the most vulnerable. These specialized cables are the lifeline of fiber optic networks, facilitating the high-speed transfer of data across various network components. The reliability and performance of these networks heavily rely on the proper selection and utilization of Patch Cable Lengths. The length of Fiber Optic. The fiber patch cable guide below illustrates the critical factors to consider when determining the optimal length for patch cables. Because I have to, its not a choice I have.

What happens if a fiber optic patch cord is short



Selecting the appropriate cable length for fiber optic patch cables is crucial for maintaining optimal network performance. Incorrect cable lengths can lead to signal attenuation, ...



Despite their essential role, fiber optic patch cords can encounter various problems that may compromise network performance. Understanding these common issues and their solutions is vital ...



Because a short link will have effectively 0dB of attenuation, within ...



The minimum fiber patch cable length is 1 m for both single-mode and polarization-maintaining fibers. Since there can be issues with even shorter fiber cables we recommend only using fibers with that ...



Learn how to calculate fiber patch cord lengths with accuracy. Ensure optimal performance, slack management, and future scalability.



Discover how fiber patch cords affect network reliability, signal loss, and uptime. Learn why quality jumpers are critical for data centers, FTTH, and ...



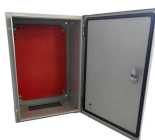
Engineering analysis of common fiber optic patch cord failures, covering root causes, symptoms, and prevention strategies in FTTH and data center networks.



These short fiber optic cords connect transceivers, switches, patch panels, and servers. Without them, even the best optical modules and switches cannot deliver performance.



Discover how fiber patch cords affect network reliability, signal loss, and uptime. Learn why quality jumpers are critical for data centers, FTTH, and campuses.



While a cut or damaged fiber optic cable can temporarily take your network down, it is possible to quickly fix the cable with the right tools. This wikiHow article will teach you how to splice a ...



If this patch cord is damaged, a homeowner can safely purchase and replace it to restore service, provided it matches the specific connector type and polish (e.g., SC/APC).



Because a short link will have effectively 0dB of attenuation, within the context of the question, the way to interpret the above chart is that the TX power (shown as a range of dBm values) ...

Contact Us

For more information, pricing, or custom data center solutions, please contact us:

Website: <https://www.yoahorroenergia.es>

Email: hello@yoahorroenergia.es

Phone: +233 54 318 7269

Address: Plot 28, Spintex Road, Accra, Greater Accra, Ghana

This document is for informational purposes only. Specifications subject to change without notice.

