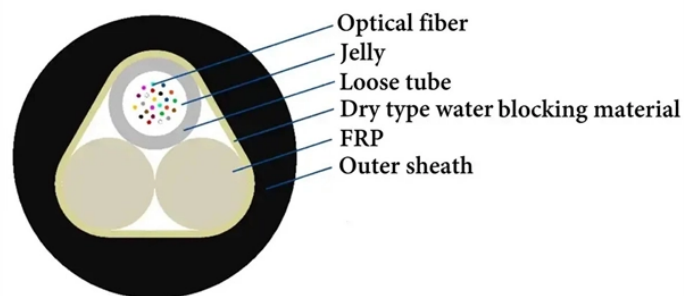


What does a negative IL value mean for an lc fiber optic patch cord



Overview

It represents the total optical power lost when a fiber cable, connector, or assembly is inserted into a transmission link. Excessive insertion loss can lead to weak signals, increased bit errors, and even complete link failure. Insertion loss (IL) and return loss (RL) are key performance indicators of fiber optic patch cords.



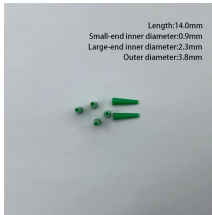
What does a negative IL value mean for an lc fiber optic patch cord



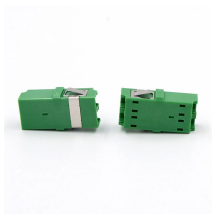
It reflects the efficiency of the patch cord in transmitting optical signals. Low IL is critical for maintaining signal strength across long distances and ensuring high-speed data integrity.



DOES definition: a plural of doe. See examples of does used in a sentence.



Learn how to use do and does with simple rules, clear examples, and real sentence practice for questions and negatives.



Discover what Fiber Insertion Loss means and how it affects signal quality in fiber cables. Get the essential insights now.



The meaning of DOES is present tense third-person singular of do; plural of doe.



In duplex and breakout applications, it's common to use plug-and-play MPO-to-LC cassettes at fiber patch panels. However, these cassettes include the loss of the MPO connection at ...



Insertion loss, also known as attenuation, is the loss of optical power that occurs when light passes through a fiber optic connector. It is caused by factors such as misalignment, air gaps, and ...



Insertion Loss (IL) is the amount of optical power lost as the signal travels from one point to another in a fiber optic link, usually across connectors or splices.



We've put together a guide to help you use do, does, and did as action and auxiliary verbs in the simple past and present tenses.



Insertion Loss (IL) - The loss of signal power resulting from inserting a device in an optical fiber. This can be referred to as attenuation and is usually expressed as a ratio, in dB, relative to the ...



Discover when to use do and does in English grammar. Learn the rules for questions and negatives, see clear examples, and practice with easy exercises to master correct usage.



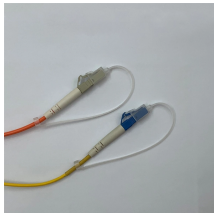
Evidently, fiber end-face defects like scratches, pits, cracks, and particle contamination will have a direct impact on the performance, contributing to poor insertion/return loss.



It represents the total optical power lost when a fiber cable, connector, or assembly is inserted into a transmission link. Excessive insertion loss can lead to weak signals, increased bit ...



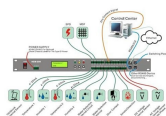
The IL value represents the loss of power as light travels through the fiber or network component. If the input power is higher than the output power, it means the network element (such ...



Stop guessing between do vs. does! Learn the easy rules for questions, negatives, and emphasis with our 10-second subject-verb chart.



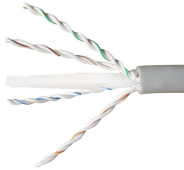
DOES meaning: 1. he/she/it form of do 2. he/she/it form of do 3. present simple of do, used with he/she/it. Learn more.



Definition of does verb in Oxford Advanced Learner's Dictionary. Meaning, pronunciation, picture, example sentences, grammar, usage notes, synonyms and more.



Insertion Loss (IL) is the amount of optical power lost as the signal travels from one point to another in a fiber optic link, usually across connectors or ...



Insertion Loss refers to the loss of optical power resulting from the insertion of a component (such as a patch cord connector, an FBG sensor, or a coupler) into an optical fiber link.



Both do and does are present tense forms of the verb do. Which is the correct form to use depends on the subject of your sentence. In this article, we'll explain the difference between do ...



Examples of "does" in a sentence does These examples have been automatically selected and may contain sensitive content that does not reflect the opinions or policies of Collins, or its parent ...

Contact Us

For more information, pricing, or custom data center solutions, please contact us:

Website: <https://www.yoahorroenergia.es>

Email: hello@yoahorroenergia.es

Phone: +233 54 318 7269

Address: Plot 28, Spintex Road, Accra, Greater Accra, Ghana

This document is for informational purposes only. Specifications subject to change without notice.

