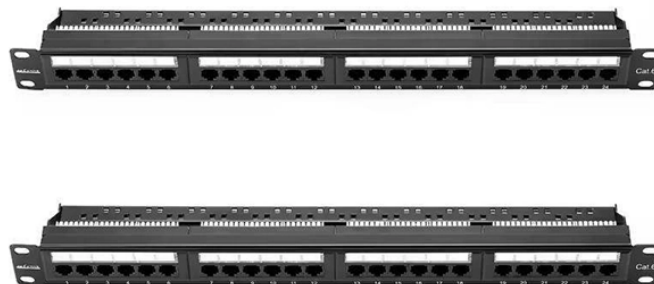


What circuit breakers are in the distribution box



What circuit breakers are in the distribution box



Choose the right size and setup for multiple circuit breakers in your distribution box to ensure safety, code compliance, and room for future upgrades.



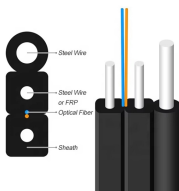
Key components of an electrical panel include the main circuit breaker, individual circuit breakers, and bus bars, all playing ...



The main parts are the Miniature Circuit Breaker (MCB), Residual Current Device (RCD), busbars, and the main switch. Safe habits and checking the box often help stop electrical accidents.



Each circuit is safeguarded by a protective fuse or circuit breaker. Inside a distribution box are components like circuit breakers, earth leakage units, doorbells, and timers. The building's ...

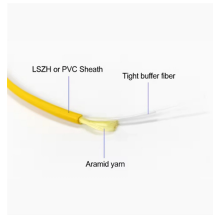


Distribution boxes are equipped with circuit breakers or fuses that protect individual circuits from overcurrent, short circuits, or ground faults. When an abnormal current is detected, the ...



Network Cabinet & Rack

Circuit breakers and fuses are the safety heroes of the distribution box. Their main job is to protect the electrical system from damage caused by overloads or faults. If there's too much power ...



Mount individual circuit breakers in the designated positions within the distribution box. Each breaker should match the current rating and type required for its specific circuit.



At the heart of any distribution box are the circuit breakers. These are like the box's soldiers, standing guard over each circuit to prevent overloading, ...



At the heart of any distribution box are the circuit breakers. These are like the box's soldiers, standing guard over each circuit to prevent overloading, overheating, and short-circuiting.



The distribution board typically contains circuit breakers or fuses for each circuit, allowing for individual control and protection of specific electrical circuits.



Key components of an electrical panel include the main circuit breaker, individual circuit breakers, and bus bars, all playing vital roles in managing power distribution and protecting against ...



North American distribution boards are generally housed in sheet metal enclosures, with the circuit breakers positioned in two columns operable from the front.

Contact Us

For more information, pricing, or custom data center solutions, please contact us:

Website: <https://www.yoahorroenergia.es>

Email: hello@yoahorroenergia.es

Phone: +233 54 318 7269

Address: Plot 28, Spintex Road, Accra, Greater Accra, Ghana

This document is for informational purposes only. Specifications subject to change without notice.

