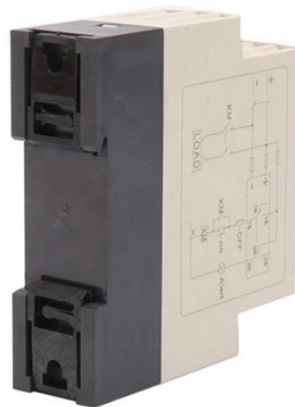
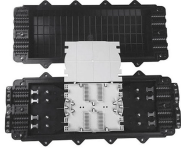


What causes cable trays to shrink due to cold



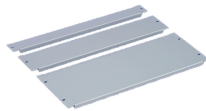
What causes cable trays to shrink due to cold



Extreme cold weather can have adverse effects on your wire and cable, causing them to temporarily become brittle and inflexible. In these conditions, some cables will stiffen and even crack if they are ...



Can I reconfigure tray layouts later? What's the best tray material for outdoor use? How can I reduce electromagnetic interference in trays? What are the common faults in cable? What is ...



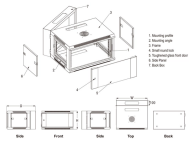
In designing supports for a cable tray system, consideration should be given to the loads associated with future cable additions and any additional loading that may be applied to the cable tray system (e.g., ...



The repeated change from a cold environment to the heat generated by an operating device causes a process called thermal cycling. Since the metal components, solder, and circuit ...



Cold bend test drives the cable's flexibility and plasticity while being bent. Cold impact test addresses the cable's ability to resist damage at low temperatures.



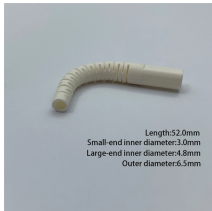
Why Temperature Changes Can Damage Metal Trays The cable trays made of metal, in fact, expand and contract depending on the temperature. The metal gets longer, and the heat ...



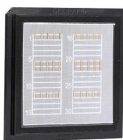
How materials expand and shrink: Materials get bigger when hot and smaller when cold. In places with big temperature swings, this constant movement can put stress on the tray system and ...



As temperature decreases, low-carbon steel products will lose ductility slowly until a certain point where the ductility rapidly decreases by over 50% within a very small temperature range. This point ...



Some people ignore this aspect after making a choice, so they also make the wrong decision, which eventually has a very negative impact on the use. Therefore, in the safety design of ...



Cable trays must be adequately supported to carry the weight of cables plus any additional loads (such as snow or ice for outdoor installations). Use supports (wall brackets, trapeze ...

Contact Us

For more information, pricing, or custom data center solutions, please contact us:

Website: <https://www.yoahorroenergia.es>

Email: hello@yoahorroenergia.es

Phone: +233 54 318 7269

Address: Plot 28, Spintex Road, Accra, Greater Accra, Ghana

This document is for informational purposes only. Specifications subject to change without notice.

