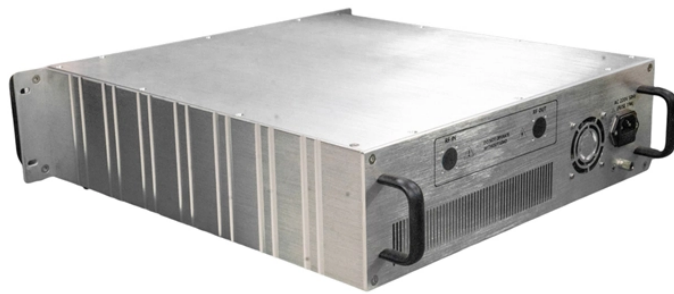







# Weight of Singapore Ladder Cable Tray



## Weight of Singapore Ladder Cable Tray

	<p>Height (H): 50mm, 70mm, 100mm, 120mm, 150mm. Depth (D): 1.2mm, 1.5mm, 2.0mm. / Hot dip galvani CABLE TRAY Straight Section.</p>
	<p>Weights of Ladder cable tray with Diff Runner size with same Rung size 15X35X15 Tray Size (width) in mm 100 150 200 300...</p>
	<p>The document provides pricing information for ladder cable tray and perforated cable tray in Indian rupees per meter for various tray widths, material thicknesses, and heights.</p>
	<p>In order to choose construction pieced of sufficient weight load ability, the load of each Cable Tray or Cable Ladder at the support point has to be determined.</p>
	<p>Cable tray systems and cable ladder systems are designed for use as supports for cables and not as enclosures giving full mechanical protection. Cable trays are typically used for light weight cable ...</p>



In this guide, we'll walk you through the step-by-step process for calculating cable tray weight, while providing examples for both channel trays and ladder trays.



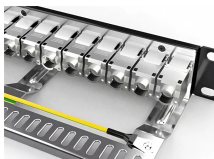
Submittals for cable ladder and tray Eaton's submittal builder tool for B-Line series cable ladder and tray allows you to easily filter, select and download straight section, fitting and accessory submittals.



U-LITM Steel Cable Tray Product Range U-LITM design of Cable Ladder is compact and fast to install, with both straight Cable Ladder and all accessories having a unique integrated coupling system.



A Cable Tray, Ladder and Trunking Supplier in Singapore. Cable Tray and Ladder, Cable Trunking, Wire mesh Basket Tray - Comply to IEC 61537 and NEMA VE-1 and SS249.



Refers to the approximate height of a cable tray used for specifying. Selecting a specific height will show cable trays with that height, as well as cable tray accessories compatible with that height.



This document contains cable ladder weight calculation sheets for multiple locations. It lists the cable sizes and quantities, their weights, and the selected cable ladder ...



The glass fiber to resin content shall be maintained between 45 to 65 percent by weight in all pultruded components except flat sheet which shall be 35 to 45 percent; and 25 to 45 percent by weight in all ...



In most cases, Wanco Steel Cable Ladders exceed the minimum strength requirements of each ladder class. The NEMA load graphs in this brochure should be used as a guide to find out the actual safe ...

## Contact Us

For more information, pricing, or custom data center solutions, please contact us:

Website: <https://www.yoahorroenergia.es>

Email: [hello@yoahorroenergia.es](mailto:hello@yoahorroenergia.es)

Phone: +233 54 318 7269

Address: Plot 28, Spintex Road, Accra, Greater Accra, Ghana

This document is for informational purposes only. Specifications subject to change without notice.

