

# Vertical distance from primary distribution box



## Overview

a) 3-foot minimum from combustible building surfaces to the edge of the pad. Non-combustible materials include brick, clay, concrete, steel, stone, and stucco. This bulletin presents information and the equations needed to determine the maximum span lengths that will meet NESC mid-span and supporting structure clearance requirements between conductors. 1 Purpose and Scope of Bulletin: The conductor clearance requirements of Rule 235 of. This standard provides the vertical clearance required for above ground conductors, communication wires, and span guys. Expanded note 10, including new Table 1, to add 12 kV and 25 kV conductor values. EXCEPTION: The minimum radial distances in this rule shall not apply to uncovered, grounded, non-dielectric fiber optic cables in transition on metallic structures, which must comply with Rule 38, Table 2, Case 16a.

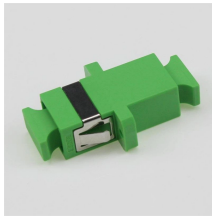
## Vertical distance from primary distribution box



It includes minimum clearances for indoor and outdoor phases, ground clearances, clearances between crossing lines, minimum heights above railways, clearances ...



Electrical clearances set the minimum safe distances for panels, overhead lines, pools, and buried wiring — and ignoring them has real consequences.



10"-0" VERTICAL CLEARANCE FROM THE HIGHEST POINT OF THE READILY ACCESSIBLE ROOF, BALCONY, ATTACHED DECK, FIRE ESCAPE OR OTHER STRUCTURE WHICH IT PASSES OR ...



\* Preferred clearances maybe reduced with the written permission of the affect plant owner(s) \*\*  
Clearance above and below to be determined on a case-by-case basis



Overhead distribution primary conductors require a minimum horizontal clearance of 2m plus horizontal swing from any structure or working area, and a vertical clearance of 3 m plus maximum design sag ...



Climbing Space is an unobstructed, vertical space along the side or corner of the pole.



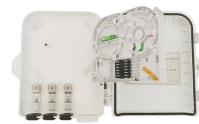
\* - THE MULTIGROUNDED SYSTEM NEUTRAL HAS THE SAME CLEARANCE AS THE 600V SYSTEM. \*\* - THE VERTICAL CLEARANCES IN THE ABOVE TABLE ARE UNDER MAXIMUM ...



Vertical clearance does not apply to neutral, comm, grounded guy, or TPX that are 10 feet or more from edge of pool, diving platform, slide, or pool objects. Aboveground pool with deck or ladder, clearance ...



Where unprotected vertical conductors are in excess of 12 feet in length, additional supports shall be installed so that the maximum length of conductor between supports is not more than 12 feet.



a) 3-foot minimum from combustible building surfaces to the edge of the pad. b) 2-foot minimum from non-combustible building surfaces to the edge of the pad. Non-combustible materials include brick, ...

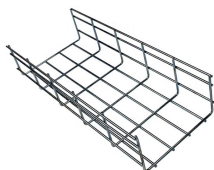


Table 4.2 of this bulletin compares the calculated NESC basic vertical clearance requirements to the standard vertical clearances of RUS standard primary pole-top assemblies.



The transformer design criteria provided herein apply to interior applications and to dry-type transformers fed by distribution traditionally placed in/for the facility downstream of the main service.

## Contact Us

For more information, pricing, or custom data center solutions, please contact us:

Website: <https://www.yoahorroenergia.es>

Email: [hello@yoahorroenergia.es](mailto:hello@yoahorroenergia.es)

Phone: +233 54 318 7269

Address: Plot 28, Spintex Road, Accra, Greater Accra, Ghana

This document is for informational purposes only. Specifications subject to change without notice.

