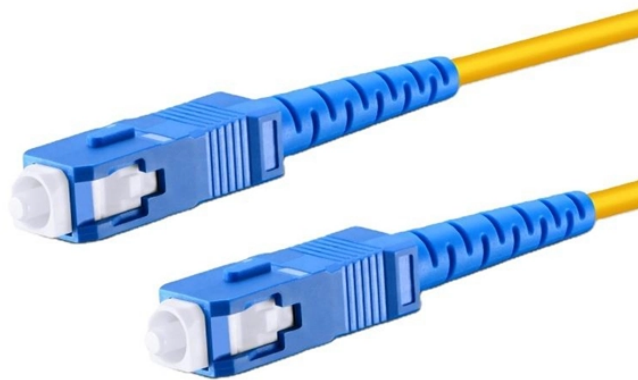


Using optical modules in Huawei switches



Overview

A switch must use optical or copper modules that have been certified for use on Huawei S switches. How Do I Query the Optical Modules Supported by Switches?

Huawei Switches Must Use Huawei-certified Optical Modules Are Optical Modules of Huawei Switches Interchangeable with Optical Modules of Other Manufacturers?

What Are the Differences Between a 10GBASE-LRM Optical Module and Other Optical. The purchased products, services and features are stipulated by the contract made between Huawei and the customer. All or part of the products, services and features described in this document may not be within the purchase scope or the usage scope. Unless otherwise specified in the contract, all. Optical modules are widely used in switches, network interface cards (NICs), routers, and other communication devices. During use, reading optical module information helps understand its real-time operating status, enabling faster troubleshooting of link abnormalities. This section describes the

differences between MMFs and SMFs. An MMF has a relatively thick fiber core and can transmit optical signals of multiple modes. Huawei is not liable for any problem caused by the use of non-certified optical or.

Using optical modules in Huawei switches



If your Huawei CloudEngine links flap after an optic swap, the root cause is usually not “bad fiber,” but transceiver compatibility details like DOM signaling, transceiver vendor profile, and ...



A switch must use optical or copper modules that have been certified for use on Huawei S switches. Non-certified optical or copper modules cannot ensure transmission reliability and may affect service ...



Optical modules are widely used in switches, network interface cards (NICs), routers, and other communication devices. During use, reading optical module information helps understand its real ...



This article summarizes several solutions for using optical modules with switches and common problems encountered during usage, along with specific solutions.



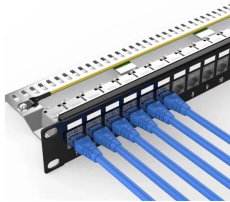
Check whether the optical module is Huawei-certified. If it is not certified by Huawei, replace it with a Huawei certified one. Remove and reinstall the optical module. If this resolves the ...



A switch must use optical or copper modules that have been certified for use on Huawei switches. Non-certified optical or copper modules cannot ensure transmission reliability and may affect service ...



The Huawei-developed optical modules of CE series switches support two types of optical connectors: lucent connectors or local connectors (LCs) and Multi-fiber Push On (MPO) connectors.



Huawei switches using non-certified optical module may not be able to read the information, can not guarantee the accuracy of the information read, recommend the use of Huawei certified optical ...



1. Determine the type and installation position of the optical module based on site requirements.
2. Horizontally insert the optical module into the optical port until the optical module snaps into place. ...

Contact Us

For more information, pricing, or custom data center solutions, please contact us:

Website: <https://www.yoahorroenergia.es>

Email: hello@yoahorroenergia.es

Phone: +233 54 318 7269

Address: Plot 28, Spintex Road, Accra, Greater Accra, Ghana

This document is for informational purposes only. Specifications subject to change without notice.

