

UAE Explosion-proof Distribution Box Size Requirements



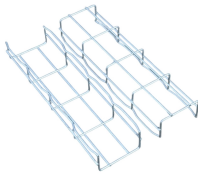
Overview

This guide explains how to choose explosion proof lighting, junction boxes, and cable glands for UAE projects—while keeping procurement, documentation, and delivery timelines under control through New World Horizon (NWH). ·Flameproof enclosure (Ex db), which can be used as feed distribution equipment in control and distribution system (such as distribution box, switch box of main circuit, control box, terminal box or motor starting box etc.) Enclosure: 304 stainless steel, 316L stainless steel and Q235. ·Equipped. Supermec ATEX Junction Box & Enclosures are designed to satisfy most of our clients' requirements for CONTROL explosion-proof and flameproof enclosures. Team Switchgear and Control LLC supplies and custom-assembles ATEX and IECEx certified explosion proof junction boxes. An explosion-proof distribution board is an enclosure designed to safely distribute electrical power in areas where flammable gases, vapors, or combustible dusts may be present.

UAE Explosion-proof Distribution Box Size Requirements



Learn how to select explosion proof lighting, junction boxes & cable glands for Zone 1 & Zone 2 in UAE with ATEX/IECEx compliance guidance.



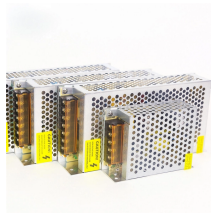
Wiring terminations in classified hazardous areas require certified explosion proof junction boxes that eliminate the risk of ignition from internal arcs, sparks, or hot surfaces.



·Equipped with specialized hinge structure, which can prevent the flameproof joints from damage when opening and closing the box, and greatly prolong the service life of box. The boxes can be combined ...



An explosion-proof distribution board is an enclosure designed to safely distribute electrical power in areas where flammable gases, vapors, or combustible dusts may be present.



All explosion-proof enclosures, lighting or power distribution boxes are manufactured using the latest technologies, both mechanical and electrical, using materials able to resist in most highly corrosive ...



Designed with flameproof enclosure (Ex d IIB+H₂), suitable for use as feed distribution equipment in control and distribution systems Applicable for distribution applications such as main ...



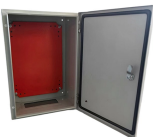
Junction box (ATEX, Ex, Explosion Proof, flame proof) can come in many different sizes depending on the number and type of connections required. Junction boxes used in industrial applications are often ...



Prolux International is UAE's one of the leading suppliers and integrator for explosion-proof junction boxes. With our commitment to excellence, technical expertise and experiance gained over years, ...



This guide explains how to choose explosion proof lighting, junction boxes, and cable glands for UAE projects—while keeping procurement, documentation, and delivery timelines under ...



For more information on our range of explosion proof enclosures and distribution boxes please click on the links above or contact us at ex@warom.ae.

Contact Us

For more information, pricing, or custom data center solutions, please contact us:

Website: <https://www.yoahorroenergia.es>

Email: hello@yoahorroenergia.es

Phone: +233 54 318 7269

Address: Plot 28, Spintex Road, Accra, Greater Accra, Ghana

This document is for informational purposes only. Specifications subject to change without notice.

