

# Two core switches used together



## Overview

Switch cascading is a traditional method to interconnect multiple Ethernet switches. Among the various topologies, daisy chain and star are the most. I want to provide best redundancy for an access switch (Cisco 3650) when connecting to two core switches (Cisco 9500 series), as show in attached topology. My question is, should I configure the 2 uplinks as a port channel?

Or. Connecting switches can be achieved through two common methods: cascading and stacking. Owing to the complexity of data transfer and communication applications, Ethernet network monitoring and management are also getting. When one switch cannot meet the number of ports and a specific functional requirement, usually users will connect multiple Ethernet switches together, so how to connect multiple Ethernet switches together during network deployment?

Three common types of connections are currently available:

## Two core switches used together



Switch cascading is a traditional method to interconnect multiple Ethernet switches. This technique involves various network topologies and allows users to configure and manage each switch...



To connect multiple Ethernet switches, the best way is to use a multi-strand fiber cable. The 4-strand pre-terminated fiber optic cable consists of four individual strands or fibers of glass or ...



Normally Nexus are used in Datacenters. They do not support stacking for logical management. If you have the ports and you expect switch to switch traffic to be high, then 2 links ...



There are various approaches to connect multiple switches, among which switch stacking vs trunking vs uplink are the most prevailing ones. This post aims to elaborate on the three switch connection ...



Three common types of connections are currently available: cascading, stacking and clustering. This article aims to clarify these three techniques and the best way to connect the switches among them. ...



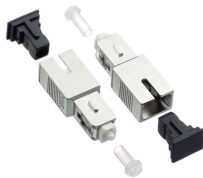
Are you looking to expand your network infrastructure and connect multiple switches together? Connecting switches can be achieved through two common methods: cascading and stacking.



This article will explore three common connection methods: switch cascading, switch stacking, and switch clustering, and will help you determine the best approach based on network ...



Solved: I want to provide best redundancy for an access switch (Cisco 3650) when connecting to two core switches (Cisco 9500 series), as show in attached topology.



Explained three methods to connect multiple Ethernet switches including stacking, cascading, and clustering. Know which method best fits your requirements.



All edge switches and WAN routers are connected to both core 4507s. We have a Port-Group of two wires connecting the core switches together, and we built a VLAN interface (with an IP ...

## Contact Us

For more information, pricing, or custom data center solutions, please contact us:

Website: <https://www.yoahorroenergia.es>

Email: [hello@yoahorroenergia.es](mailto:hello@yoahorroenergia.es)

Phone: +233 54 318 7269

Address: Plot 28, Spintex Road, Accra, Greater Accra, Ghana

This document is for informational purposes only. Specifications subject to change without notice.

