

# Trough-type cable trays and boxes



## Trough-type cable trays and boxes



Choose from our selection of cable troughs, including raceway, wire duct, and more. Same and Next Day Delivery.



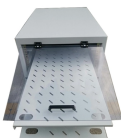
Tripp Lite Roof-Mounted Cable Troughs help organize network cabling outside your rack enclosure in your data center, which also helps ease stress on your expensive cables.



Raceway, Cable Tray, Duct, & Trough Wireway, Trough & Gutter Nema Type 3r Trough & Gutter



There are a large number of cable tray fittings that are made compatible with each type of tray. These fittings help in maintaining support of the cable tray system. Shop Graybar's collection of cable tray ...



Cablofil steel trough trays provide the strength and security required when then need to limit cable access is of primary importance.



From a design standpoint, trough trays emphasize continuous cable support while maintaining moderate structural strength. They occupy a middle ground between ladder trays and ...



Husky Trough Tray is a cable tray consisting of ventilated or solid bottom contained within longitudinal side members. Our solid bottom trough tray is used to carry smaller instrumentation, data ...



Explore wiring trough enclosures and electrical wireway boxes for protected cable routing, terminations, and junctions.



Confused about cable management? Learn the differences between Trough Cable Tray, Solid Bottom Cable Tray, and Cable Trunking. We simplify cable support for you.



Flexible, versatile wire and cable protection The widest range of fittings including elbows, adapters, telescopic fittings to meet most commercial application needs

## Contact Us

For more information, pricing, or custom data center solutions, please contact us:

Website: <https://www.yoahorroenergia.es>

Email: [hello@yoahorroenergia.es](mailto:hello@yoahorroenergia.es)

Phone: +233 54 318 7269

Address: Plot 28, Spintex Road, Accra, Greater Accra, Ghana

This document is for informational purposes only. Specifications subject to change without notice.

