

Troubleshooting power supply failure in distribution box



Overview

Be sure that the power distribution box has sufficient power provided to it. Long cable runs can result in a voltage drop, which can be solved by using a heavy gauge wire. It helps identify faults early and prevents costly. In modern power systems, distribution boxes are the core equipment for power distribution and control, and their stable operation is crucial to ensuring the safety and reliability of power supply. Do not touch live parts, turn off the corresponding power switch to avoid the risk of electric shock.

Troubleshooting power supply failure in distribution box



Check the electrical load and ensure that the sensors do not exceed the 10 Amp maximum. Check each wire for damage that may lead to a short. Replace any damaged cables. Check the breaker and be ...



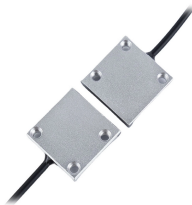
Distribution boxes are the unsung heroes of our electrical systems, quietly managing power until something goes wrong. When they start tripping, overheating, or making strange noises, it's more ...






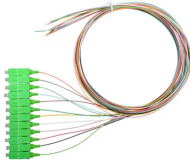


Some of the procedures in this manual may involve the removal and reconnection of components (connectors, etc.) to isolate a problem. For personal safety, as well as protection of the equipment ...



Make sure the power supply is adequate and the power cord is well connected. Check the fuse or circuit breaker: Check for a blown or tripped fuse or circuit breaker.



This blog explores common problems associated with 3-phase power distribution boxes and offers practical troubleshooting tips to keep your system running smoothly.

	<p>A clear troubleshooting process ensures power flows safely and efficiently. In this guide, you will learn how distribution systems work, common problems, and practical ways to diagnose issues.</p>
	<p>Troubleshooting The following is a list of the most common situations where the equipment does not perform as intended, the most likely cause, and a possible corrective action.</p>
	<p>This comprehensive guide explores the most common LV power distribution problems and provides practical troubleshooting solutions that electrical professionals can implement to maintain ...</p>
	<p>The main problems encountered with distribution boxes include installation and layout problems, electrical connection and grounding problems, maintenance and care problems, ...</p>
	<p>This blog explores common problems associated with 3-phase power distribution boxes and offers practical troubleshooting tips to keep your system running smoothly.</p>
	<p>To successfully troubleshoot the power system, identify the problem, isolate the fault, repair or replace your component, and verify correctness through ...</p>



To successfully troubleshoot the power system, identify the problem, isolate the fault, repair or replace your component, and verify correctness through testing.

Contact Us

For more information, pricing, or custom data center solutions, please contact us:

Website: <https://www.yoahorroenergia.es>

Email: hello@yoahorroenergia.es

Phone: +233 54 318 7269

Address: Plot 28, Spintex Road, Accra, Greater Accra, Ghana

This document is for informational purposes only. Specifications subject to change without notice.

