

Tracking-resistant optical transmitters for rail transit in Papua New Guinea



Tracking-resistant optical transmitters for rail transit in Papua New



OptaSense offers solutions for detecting rolling stock and track anomalies such as wheel flats, rail breaks, rail head condition and dragging equipment. OptaSense continues to develop and extend its ...



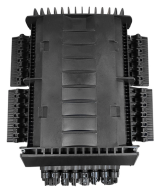
This paper presented findings from an ongoing research study focused on the application of Optical Fiber Sensors (OFSs) to monitor track performance, with particular emphasis on track ...



Different mounting approaches will be evaluated to establish how the optical fiber sensors can be adequately mounted to the rail to ensure accurate measurements under harsh operating conditions.



To validate the operation of the proposed optical sensor under real-world conditions, we perform tests with light rail vehicles, maintenance vehicles and freight vehicles with the objective of ...



After a brief analysis of the mechanical behaviour of ballasted railway tracks, an overview of the most common monitoring techniques is presented. A special attention is paid on strain gages ...



PrismaRail monitors the railroad without the need to install extra sensors on the tracks. Instead, it's an easy deployment, utilizing the existing optical fiber laid along the tracks. PrismaRail tracks the ...



This is not only an important condition for the sustainable development of rail transit, but also a backbone technology to ensure the safety and real-time operation of rail transit system.



Our system accurately detects train movements independently from trackside equipment, locates potential issues such as track faults, track condition changes, intrusions, and equipment failures, ...



This investigation encompasses diverse domains, including railway monitoring systems and rail track sensing systems, essential for developing the proposed real-time rail track...



Our system accurately detects train movements independently from trackside equipment, locates potential issues such as track faults, track condition changes, ...



Railway Technology has listed leading suppliers of railway tracking and monitoring equipment and solutions, based on its intel, insights and extensive experience in the sector.

Contact Us

For more information, pricing, or custom data center solutions, please contact us:

Website: <https://www.yoahorroenergia.es>

Email: hello@yoahorroenergia.es

Phone: +233 54 318 7269

Address: Plot 28, Spintex Road, Accra, Greater Accra, Ghana

This document is for informational purposes only. Specifications subject to change without notice.

