

Three-level distribution box is an essential household appliance



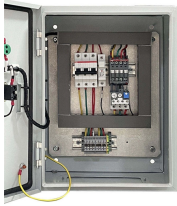
Overview

Summary of Three-Tier Power Distribution System: Primary: The main distribution panel, supplies power from the transformer. Electrical equipment is installed under the switch box, forming a three-level distribution. "Two level protection" mainly refers to the use of leakage protection measures. These boxes feature bottom entry and exit cables, front-opening doors, and main busbars connected with copper strips for optimal contact. They also include metering systems, ensuring. A distribution boxes is an essential device that manages the safe and efficient flow of electrical power throughout different areas of a building or facility. It is commonly used in homes, offices, and industrial settings to control and protect electrical circuits. Understanding its significance. The electricity supply chain consists of three primary segments: generation, where electricity is produced; transmission, which moves power over long distances via high-voltage power lines; and distribution, which moves power over shorter distances to end users (homes, businesses, industrial sites).

Three-level distribution box is an essential household appliance



Understand distribution boxes (DB boxes) in 5 minutes. Learn about types, components, functions, and uses. Find the perfect DB box for your needs.



Third level distribution box: refers to the final junction box of each electrical appliance, which can be movable and fixed. Remember that the leakage protection switch is the last one, and ...



There are three levels in the distribution of power distribution box, including grade one, level 2 and end level. Take the first class household power distribution box as a case, it is the core of the whole ...



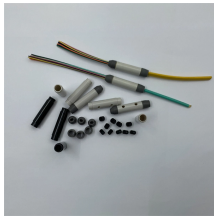
Tertiary: Final distribution point for equipment or household use. This structure ensures effective power management, safety, and reliability in complex electrical systems, particularly on construction sites or ...



Modern household and industrial wiring requires the three-wire system, shown schematically in Figure 23.30, which has several safety features. First is the familiar circuit breaker (or fuse) to prevent ...



Tertiary Distribution Box: The final connection box for each electrical appliance, which can be movable or fixed. Residual current devices must be the final protective device, with each ...



A 15-kilowatt, 120/240-volt household electric range is installed in a new dwelling unit. The range is located within 5 feet of the top inside edge of the kitchen sink.



Three level protection refers to: on-site construction of electricity must be done in the general distribution box, distribution box and switch box to install leakage protection.



A distribution boxes is an essential device that manages the safe and efficient flow of electrical power throughout different areas of a building or facility. It is commonly used in homes, ...



Distribution circuits, also known as express feeders or distribution main feeders, carry low-voltage power from the distribution substations to transformers closer to customer sites that further reduce the ...

Contact Us

For more information, pricing, or custom data center solutions, please contact us:

Website: <https://www.yoahorroenergia.es>

Email: hello@yoahorroenergia.es

Phone: +233 54 318 7269

Address: Plot 28, Spintex Road, Accra, Greater Accra, Ghana

This document is for informational purposes only. Specifications subject to change without notice.

