

# Thousand-line single-core optical module



## Overview

The transceiver consists of three sections: a FP laser transmitter, a PIN photodiode integrated with a trans-impedance preamplifier (TIA) and MCU control unit. All modules satisfy class I laser safety requirements. As part of the O-band (1260–1360 nm), it balances low dispersion, stable performance, and cost efficiency. This makes it widely adopted in data centers, enterprise backbones, and metro access. Learn why IT Pros trust StarTech. TESTED FOR COMPATIBILITY: Hot-swappable in MSA Compliant routers and switches; DDM support reports the transceiver's status to most SNMP network management tools. 25Gbps SFP Optical Transceiver, Dual LC single-mode fiber, 1310nm, up to 20km super long distance transmission for POE switch with SFP uplinks. Standard AC coupled CML for high speed signal and LVTTTL control and monitor signals.

## Thousand-line single-core optical module



The creation and standardization of the SFP allows for a single product to be extremely flexible and allow for the reduction of excess units and surplus fiber often required for fixed installations.



**TESTED FOR COMPATIBILITY:** Hot-swappable in MSA Compliant routers and switches; DDM support reports the transceiver's status to most SNMP network management tools.



1.25G SFP MODULE- 1.25Gbps SFP Optical Transceiver, Dual LC single-mode ...



1.25G SFP MODULE- 1.25Gbps SFP Optical Transceiver, Dual LC single-mode fiber, 1310nm, up to 20km super long distance transmission for POE switch with SFP uplinks.



An Optical transceiver module is the core part of optical communication devices. It uses fiber optical technology to send and receive data through completing the process of optical signal - electrical ...



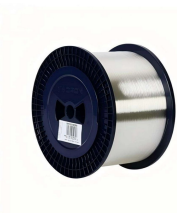
Featuring a built-in Semtec chip and reliable DFB laser / PIN receiver, the SFP module delivers low power consumption and stable optical links for 1G single mode networks like Gigabit Ethernet and ...



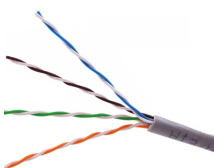
By offering high data rates, long-distance connectivity, and low power consumption, this optical module addresses the growing demands for bandwidth and reliability in modern networks.



1310nm optical modules are essential for efficient data transmission in fiber optic networks, especially for medium distances. These modules offer low signal loss and minimal ...



The SFP1G-LH-31 series single-mode transceivers are small form factor pluggable module for bi-directional serial optical data communications such as Gigabit Ethernet 1000BASE-LX and Fiber ...



The T1 Nexus T1-SFP-1G-SX is a high performance, cost effective module which ...



Description The SFP transceivers are high performance, cost effective modules supporting dual data-rate of 1.25Gbps/1.0625Gbps and 20km transmission distance with SMF. The transceiver consists of ...



The T1 Nexus T1-SFP-1G-SX is a high performance, cost effective module which have a Duplex LC optics interface. Standard AC coupled CML for high speed signal and LVTTTL control and monitor ...

## Contact Us

For more information, pricing, or custom data center solutions, please contact us:

Website: <https://www.yoahorroenergia.es>

Email: [hello@yoahorroenergia.es](mailto:hello@yoahorroenergia.es)

Phone: +233 54 318 7269

Address: Plot 28, Spintex Road, Accra, Greater Accra, Ghana

This document is for informational purposes only. Specifications subject to change without notice.

