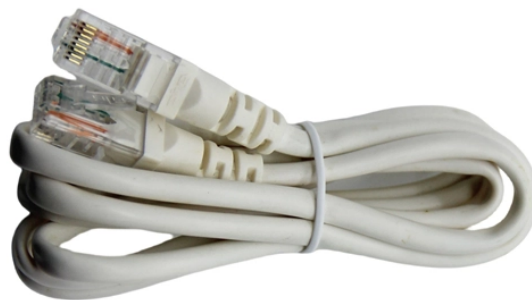


The switch has two pairs of network ports and one optical port



Overview

A combo port, also known as an optoelectronic multiplexing interface, is a photoelectric composite port with two kinds of Ethernet interfaces (RJ45 port and SFP port) on an Ethernet switch. So what is network switch combo port?

How to differentiate the combo ports from Ethernet ports on an Ethernet switch?

How to use combo SFP port?

We will make a comprehensive. It has 24 10/100 switched RJ-45 ports & 2 10/100/1000 switched RJ-45 Gigabit uplink ports with two shared SFP ports (combo ports). I'm a bit confuse w/ combo ports. So just to clarify, this switch has 24 ports 100 mbps for downlink and 2 x 1gig SFP combo ports. RJ45 ports serve access-layer copper connections; SFP/SFP+ ports enable flexible 1G/10G uplinks; SFP28 delivers 25G for modern data centers; QSFP+ and QSFP28 support high-density 40G/100G spine-leaf. Ethernet switch ports are fundamental components in modern networking, each serving specific roles

depending on network design and performance requirements. This guide explains Ethernet switch ports, categorizes the main types, and outlines their applications, helping network professionals and IT. Various port combinations, rate increase, installation in a concealed telecommunication box, recommended for indoor use, aesthetically pleasing design, and security 1 x RJ45 console port 56. 5 Mpps 76 Gbps 210 mm x 235 mm x 55 mm (8.) -40°C to +70°C (-40°F to +158°F) 3. MikroTik RouterOS supports various types of Ethernet interfaces - ranging from 10Mbps to 10Gbps Ethernet over copper twisted pair, 1Gbps, 10Gbps, 25Gbps SFP/SFP+/SFP28 interfaces and 40Gbps, 100Gbps QSFP+/QSFP28 interfaces. Certain RouterBoard devices are equipped with a combo interface that.

The switch has two pairs of network ports and one optical port



This guide provides an engineering-level overview of switch port technologies, real-world deployment mapping, and detailed selection methodology for campus, enterprise, and data center ...



Certain RouterBoard devices are equipped with a combo interface that simultaneously contains two interface types (e.g. Ethernet over twisted pair and SFP/SFP+ interface) allowing to select the most ...



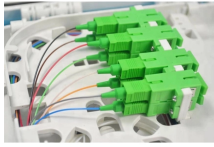
What are these two ports respectively in the industrial switch? The optical ports on the switch are usually paired together, with one TX sender and one RX receiver.



Combination ports (and optical multiplexing ports) can support two different physical ports: an electrical port (RJ45 port) and an optical port (SFP port). However, these two different ...



The Simplified Optical Ethernet solution adopts point-to-point transmission and provides a more reliable independent optical transceiver design. The high-quality signal transmission is free from external ...



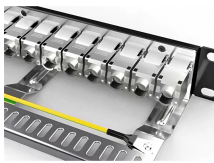
A combo port, also known as an optoelectronic multiplexing interface, is a photoelectric composite port with two kinds of Ethernet interfaces (RJ45 port and SFP port) on an Ethernet switch.



A combo port means that you can use either the RJ45 port or the SFP port. They are paired in two (which ports that are paired are usually indicated by arrows, lines or the like).



Explore all Ethernet switch port types including access, trunk, hybrid, SFP, SFP+, QSFP, QSFP28, PoE, and stack ports. Learn their functions, speeds, and best use cases for optimized ...



Ethernet switch ports are diverse and tailored to meet various networking needs, from simple local connections to complex data center environments. Understanding the different types of ...



Switches come in three types: those with purely Ethernet ports, those with purely optical ports, and those with a combination of both. Port types are limited to two: optical and Ethernet. ...

Contact Us

For more information, pricing, or custom data center solutions, please contact us:

Website: <https://www.yoahorroenergia.es>

Email: hello@yoahorroenergia.es

Phone: +233 54 318 7269

Address: Plot 28, Spintex Road, Accra, Greater Accra, Ghana

This document is for informational purposes only. Specifications subject to change without notice.

