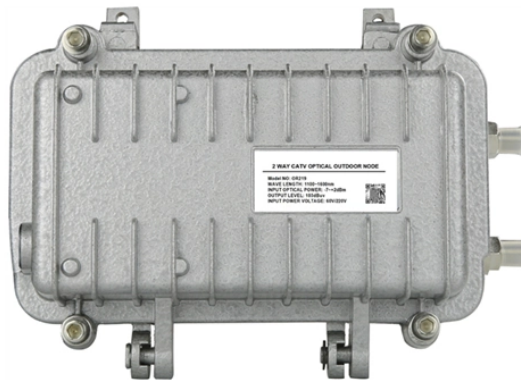


The red light on the optical power meter remains constantly lit



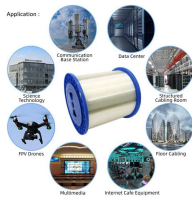
Overview

The test sets display a laser warning icon when the laser source is active to alert the user about a potentially dangerous situation. It is recommended to: Deactivate the laser before connecting or disconnecting optical cables or patchcords. Below are general answers on how to operate, maintain, and calibrate an optical fiber ranger from the list of GAO Tek's optical power meters. assumes no liability for the customer's failure to comply. An optical power meter (OPM) measures the power levels of light signals in devices that transmit data or power using light. 2- With the 1917-R turned off, connect the power detector head to the 1917-R using the PROBE INPUT JACK (see Fig. T his. Enter the optical power meter interface after booting, short press the "REF" key to set the current power value as the reference power, which can realize relative optical power test (insertion loss test) or absolute power test.

The red light on the optical power meter remains constantly lit



This catalog mainly introduces different types of FS FOPM (Fiber Optical Power Meter), including FOPM-101/FOPM-102, FOPM103/FOPM-104, FOPM-105 etc. Handheld fiber optical power meters ...



Power meters are calibrated using a traceable calibration standard. A traditional optical power meter responds to a broad spectrum of light, however, the calibration is wavelength dependent. This is not ...



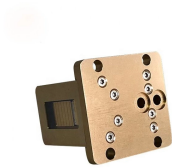
Learn how to operate, maintain, and calibrate GAO Tek's Optical Power Meters with detailed guidelines for accurate fiber optic measurements.



Enter the optical power meter interface after booting, short press the "REF" key to set the current power value as the reference power, which can realize relative optical power test (insertion loss test) or ...



The instrument powers off automatically if no keypress in 10 minutes. Press the "ON/OFF" key for about 2 seconds to power on the instrument with "Auto-off" function deactivated.



In this video, we explain how to repair an Optical Power Meter that powers ON but does NOT show any optical power reading. ...more.



Optical power meters can measure the power of both single-mode and multimode fibers. In single-mode fiber, the rays travel down its entire length without any internal reflection at all.



This is your "QuickStart" guide to testing optical power in fiber optic communications systems with a fiber optic power meter. We'll give you the basic information you need and provide some printable ...



Even though optical transceivers are typically fitted with Class 1/1M lasers, which are considered eye safe, using external lens or viewing optical radiation for an extended period can cause irreparable ...



1- Install the power detector on its optical stand. 2- With the 1917-R turned off, connect the power detector head to the 1917-R using the PROBE INPUT JACK (see Fig. 1-2).

Contact Us

For more information, pricing, or custom data center solutions, please contact us:

Website: <https://www.yoahorroenergia.es>

Email: hello@yoahorroenergia.es

Phone: +233 54 318 7269

Address: Plot 28, Spintex Road, Accra, Greater Accra, Ghana

This document is for informational purposes only. Specifications subject to change without notice.

