

The outer casing of the distribution box is connected to neutral



Overview

A neutral link is used to distribute a neutral supply to all the output loads. When single-pole MCBs are used for output loads, the neutral wire of the loads is connected to the neutral link. This prevents arc faults and ensures safety when modifying or inspecting current paths. Inside the service housing, line conductors from the utility feed typically enter through the. The rules for the use and identification of the grounded (neutral) conductor are contained in Article 200 of the National Electrical Code. Author's Comment: When you call the white/gray. All QO and Homeline load centers that are marked 'Suitable for Use as Service Equipment', will come from the factory with a Green Neutral Bonding Screw, to be installed when the load center is used in a Service Entrance Application. It has. Welcome to our channel @Electricalgenius In this video, we'll take you through a detailed step-by-step guide on wiring a home distribution DB (Distribution Board) box.

The outer casing of the distribution box is connected to neutral



Whether you're an electrician or a DIY enthusiast, this tutorial will help you understand the fundamentals of wiring a distribution box for a residential setup.



Find out how to properly wire an electrical panel box with a comprehensive diagram and step-by-step instructions.



In this article, we'll walk you through the step-by-step process of how power flows through a distribution box, what components are involved, and why each part is critical for maintaining a stable and secure ...



When a load center is used as Service Equipment, the NEC requires that the neutral shall be bonded to the metal box. The Service Equipment is identified by the fact it includes the first ...



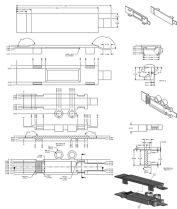
In this video, we'll walk you through the process of wiring a home distribution box with a detailed connection diagram. Whether you're an electrician or a DIY enthusiast, this guide will help ...



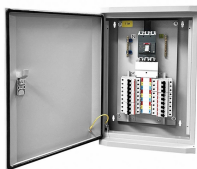
Clear wiring diagram for residential electric meter box, showing connections, safety components, and layout for accurate installation and maintenance.



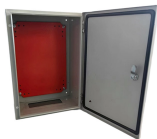
A neutral link is used to distribute a neutral supply to all the output loads. When single-pole MCBs are used for output loads, the neutral wire of the loads is connected to the neutral link.



The neutral bar carries current back to the source and keeps voltage steady. Only a qualified electrician should bond the neutral bar to the earth bar at the main panel.



The metal box of the distribution box, the electrical installation board, and the metal base and casing of the electrical appliances in the box must be grounded. The protective neutral wire ...



Neutral-to-case connections are required by the NEC to provide a low impedance path to open the circuit overcurrent protection device and ensure that dangerous voltage on metal parts is ...



The metal box of the distribution box, the electrical installation board, and the metal base and casing of the electrical appliances in the box must be ...

Contact Us

For more information, pricing, or custom data center solutions, please contact us:

Website: <https://www.yoahorroenergia.es>

Email: hello@yoahorroenergia.es

Phone: +233 54 318 7269

Address: Plot 28, Spintex Road, Accra, Greater Accra, Ghana

This document is for informational purposes only. Specifications subject to change without notice.

