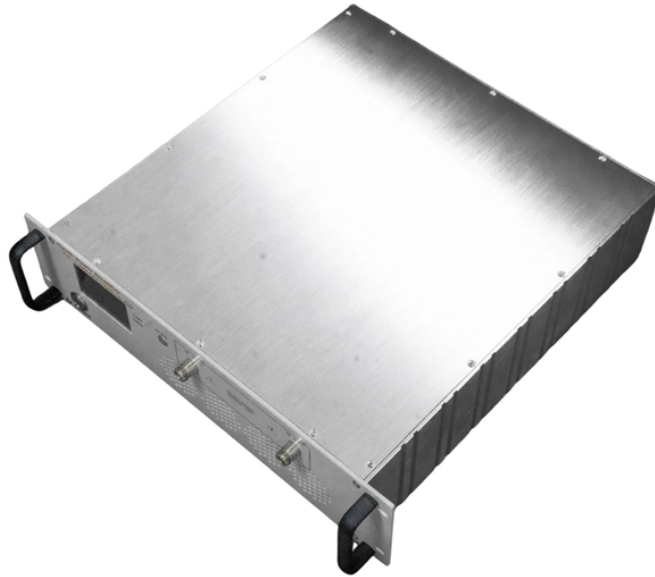


The function of the OBD optical splitter



Overview

It is a passive device connecting OLT and ONU. The optical splitter has one upstream optical interface and several downstream optical interfaces. A fiber optic PLC splitter distributes a single optical signal into multiple outputs with high uniformity and low loss, making it ideal for. The On-Board Diagnostics (OBD) system provides a standardized interface for accessing a vehicle's internal computer network. Since 1996, all vehicles sold in the United States have used the OBD2 standard, which mandates a specific 16-pin connector located within the cabin. Conversely, it can also combine multiple signals into one. Its primary role is in Passive Optical Networks (PON), which are the foundation of. Fiber optic splitter, also referred to as optical splitter, fiber splitter or beam splitter, is an integrated waveguide optical power distribution device that can split an incident light beam into two or more light beams, and vice versa, containing multiple input and output ends. Disclaimer: This content is provided by third-party contributors or.

The function of the OBD optical splitter



An Optical Splitter, also known as a beam splitter, is a passive optical device that divides a single input optical signal into two or more output signals. ...



An OBD splitter enables dual diagnostic tool connections to a vehicle's OBD-II port, duplicating signals without interference. This article explains its usage, compatibility, safety, and advantages over ...



Optical splitter is a component of PON network. It is a passive device connecting OLT and ONU. Its function is to distribute downstream data and concentrate upstream data. The optical ...



Fiber optic splitter, also referred to as optical splitter, fiber splitter or beam splitter, is an integrated waveguide optical power distribution device that can split an incident light beam into two ...



The splitter OBD2's most prominent feature is its sophisticated multi-device connectivity capability. This technology allows for seamless connection of multiple diagnostic tools, scanners, and monitoring ...



The optical splitter is a component of the PON network. It is a passive device that connects the OLT and the ONU. Its function is to distribute downlink data and concentrate uplink data. The optical splitter ...



An Optical Splitter, also known as a beam splitter, is a passive optical device that divides a single input optical signal into two or more output signals. Conversely, it can also combine multiple ...



What Is the Function of the PLC Optical Splitter?
The core function of a fiber plc splitter is to split optical power evenly while minimizing signal degradation.



Optical splitter is an integrated waveguide optical power distribution device that serves to split optical signals. It is widely used in passive optical networks (such as EPON, GPON, BPON, ...



An OBD2 splitter is an adapter cable designed to branch this connection into two or more ports, allowing multiple electronic devices to be physically connected simultaneously.



By reading on, you'll learn exactly what an OBD2 splitter does and why it's a game-changer for car enthusiasts and everyday drivers alike. We'll break down the key things to look for, ...

Contact Us

For more information, pricing, or custom data center solutions, please contact us:

Website: <https://www.yoahorroenergia.es>

Email: hello@yoahorroenergia.es

Phone: +233 54 318 7269

Address: Plot 28, Spintex Road, Accra, Greater Accra, Ghana

This document is for informational purposes only. Specifications subject to change without notice.

