

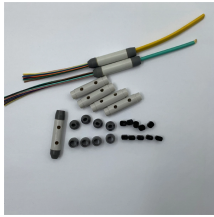
## The cable tray support was welded crookedly



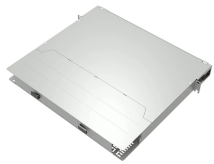
## The cable tray support was welded crookedly



All welded joints of Cable Tray Support shall be smooth enough to provide a good appearance & shall not cause any injury to working personnel. All welding work shall be done by skilled personnel.



Cable tray length is selected based on the load to be supported, the distance between the supports (also referred to as the span), and handling and installation constraints.



The cable tray should be anchored at the support nearest to its midpoint between the expansion splice plates and secured by expansion guides at all other support locations (see Figure 3-39).



Open cable tray arranged in vertical configuration for rises and drops shall have stand-off support from the wall or structural support surface to facilitate installation of Velcro cable support ties.



**GALVANISED CABLE TRAY SUPPORT SYSTEM (WELDED):** Hot dip Galvanized MS channels and angles listed in the BOQ (Section- II) shall be manufactured as per details provided in this section.



The major factors which affect the damping ratio of the cable tray systems are the input acceleration level, cable fill ratio, and the ability of the cables to move within the trays during a safe shutdown ...



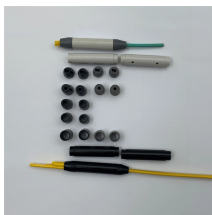
A generic guideline developed by the Cable Tray Institute indicates that cable trays should not be filled in excess of 40-50% of the inside area of the tray or of the tray's maximum weight based on the cable ...



According to the cable tray support and the welding method thereof according to the embodiment of the present invention, the welded portion can be welded by the operator alone while the...



WHEN CABLE TRAYS ARE USED IN CONTINUOUS SPANS, THE DEFLECTION OF THE CABLE TRAY IS REDUCED BY AS MUCH AS 50%. DESIGN FACTORS:  $I_x =$  MOMENT OF ...



The document discusses the weld design for connections of different sized cable trays. It provides maximum and minimum force calculations for beams of various cross sections, including PFC ...



Welded aluminum I-beam ladder cable trays are a core solution and an iconic design in the cable tray industry. The I-beam design is the most common cable tray construction. Our aluminum, I-beam ...



1.1 This specification covers the design, manufacture, inspection & testing, packing at manufacturer's works and delivery to site of galvanised mild steel structural members to be used for cable tray ...



Tools and equipment needed for cable tray support installation should be in good condition and must be checked by Supervisor / Safety Engineer prior to use in the construction area.

## Contact Us

For more information, pricing, or custom data center solutions, please contact us:

Website: <https://www.yoahorroenergia.es>

Email: [hello@yoahorroenergia.es](mailto:hello@yoahorroenergia.es)

Phone: +233 54 318 7269

Address: Plot 28, Spintex Road, Accra, Greater Accra, Ghana

This document is for informational purposes only. Specifications subject to change without notice.

