

Syrian Industrial Switch Parameter Configuration



Syrian Industrial Switch Parameter Configuration



Following the outcome of the preparatory assistance assignment it was proposed to organize a course, which will give theoretical back-ground on designing, testing, manufacturing of electrical switch gear ...



This Configuration Manual is intended to provide you with the information you require to install, commission and operate IE switches. It is aimed primarily at planning, commissioning and ...



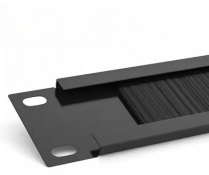
NIS3008 PRO 8GE Gigabit Ethernet Industrial Switch [Read More](#) NIS3016 PRO 16GE Gigabit Ethernet Industrial Switch



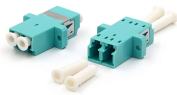
Proper transport, storage, installation, assembly, commissioning, operation and maintenance are required to ensure that the products operate safely and without any problems.



Thanks to the Bus-Adapter system, the switches support various transmission media: there are different BusAdapter versions for copper or fiber-optic cables (e.g. electrical, optical), so that the relevant ...



Extreme Industrial Switches are a family of ruggedized Layer 2 switches designed to operate under harsh environments and extended temperature conditions. They provide continuous uptime, ...



Before configuration, the device must be installed and connected up. You will find a description of the necessary steps for this in the Operating Instructions.



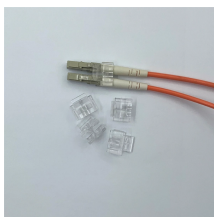
The industrial switch configuration manual is a detailed guide that instructs users on how to correctly install, configure, and optimize industrial-grade switch equipment.



Through autonegotiation, the 10/100/1000 ports configure themselves to operate at the speed of attached devices. If the attached ports do not support autonegotiation, you can explicitly set the ...



SIMATIC NET Industrial Ethernet Switches
 SCALANCE Layer 2 / Layer 3 Command Line
 Interface (CLI) V1.2 Configuration Manual
 SCALANCE XC-300 SCALANCE XR-300 SCALANCE
 XC-400 ...



To read the whole book, click the link below; to read the individual chapters, click the links on the left.

Contact Us

For more information, pricing, or custom data center solutions, please contact us:

Website: <https://www.yoahorroenergia.es>

Email: hello@yoahorroenergia.es

Phone: +233 54 318 7269

Address: Plot 28, Spintex Road, Accra, Greater Accra, Ghana

This document is for informational purposes only. Specifications subject to change without notice.

