

Switch Inspection of Single-Core Optical Module



Overview

This guide gives a practical, CLI-focused workflow for checking SFP health and diagnostics on Cisco switches, shows the exact commands you'll use, explains what the numbers mean, and compares OEM (Cisco) vs third-party modules so you can pick the right SFP module supplier. This guide gives a practical, CLI-focused workflow for checking SFP health and diagnostics on Cisco switches, shows the exact commands you'll use, explains what the numbers mean, and compares OEM (Cisco) vs third-party modules so you can pick the right SFP module supplier. Desktop fiber end-face detector for fully automated analysis of multi-core fiber connectors SmartCheck inspection instruments launched by Dimension Technology. It features automatic analysis, automatic focusing, and automatic measurement, enabling fully intelligent testing. In fiber optic networks, optical transceivers such as SFP, SFP+, QSFP28, and QSFP-DD play a vital role in converting electrical signals into optical signals and vice versa. Testing these modules ensures performance, compatibility, and long-term reliability in bandwidth-intensive environments like. The Importance of Optical Module Testing in Communication Systems An optical module integrates both a transmitter and a receiver. These two components work together through

optical fiber to deliver high-speed data transmission. The CPO is a package in which an optical module and a. InfiniBand offers a technological pathway for building AI/ML networks, with its primary advantages being low static forwarding latency and hardware fault self-repair. In building a high-performance InfiniBand network, OSFP-800G-SR8 and OSFP-SR4-400G-FL InfiniBand optical modules serve as one of the.

Switch Inspection of Single-Core Optical Module



Learn how to check SFP module health on Cisco switches. This guide covers essential CLI commands (show inventory, DOM), fixes for "unsupported ...



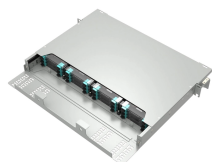
Learn how to test optical transceiver modules using power meters, BERT testers, and DDM tools. Ensure compatibility, performance, and reliability in data center and enterprise networks.



These procedures test the individual performance of the optical transceiver to ensure that every optical module sold gets the best performance possible.



A deep dive into First Article Inspection (FAI) for data-center optical-module PCBs—covering high-speed signal integrity, thermal management, and power/interconnect design to ...



This Application Note has explained the three types of CPO tests for the Switch ASIC electrical signal, optical engine optical signal, and CPO switch Ethernet signal tests.



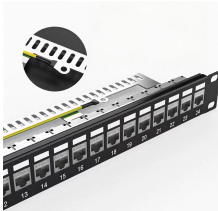
Learn how to check SFP module health on Cisco switches. This guide covers essential CLI commands (show inventory, DOM), fixes for "unsupported transceiver" errors, and interpreting optical power levels.



SmartCheck features automatic analysis, automatic focusing, automatic fiber switching, and automatic determination of fiber end faces, making the testing of multi-core connector end faces intelligent and ...



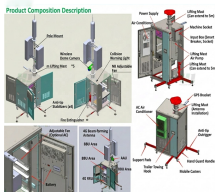
Figure 9 below, illustrates the step-by-step inspection/cleaning procedure that should be rigorously followed before a fiber is connected to another optical component—using this simple procedure can ...



These modules play a crucial role in establishing high-quality links that are zero-packet-loss, non-blocking, and low-error. The installation, removal, replacement, and maintenance of optical modules ...



In this edition of Cisco Tech Talk, I'll show you how to view the optical module status on a switch through the Command Line Interface also referred to CLI.



Engineers install the optical module into network switches to confirm proper recognition and operation. This step ensures that the module works reliably with mainstream networking equipment.

Contact Us

For more information, pricing, or custom data center solutions, please contact us:

Website: <https://www.yoahorroenergia.es>

Email: hello@yoahorroenergia.es

Phone: +233 54 318 7269

Address: Plot 28, Spintex Road, Accra, Greater Accra, Ghana

This document is for informational purposes only. Specifications subject to change without notice.

