

Swiss switchgear busbar bridge processing



Swiss switchgear busbar bridge processing



We have been supplying bespoke electrical switchgear copper solutions for over 20 years. Using EHRT technology enables Flexitech to ...



A busbar is a metallic bar or strip—typically copper or aluminum—mounted inside switchgear/switchboards to distribute high currents. Flat profiles maximize surface area for cooling ...



This paper discusses the advantages and limitations of cable connections, rigid bus bar connection and flexible bus bar connections for high current density applications.



Eaton's Power Xpert UX system in double busbar configuration is designed for your most critical applications up to 24kV and delivers increased flexibility, reliability and safety.



Before we get into how busbar offers the same benefits as IEC devices within a control panel, it is important to understand what a busbar system is and how they are used today.



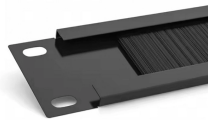
Contains the MNS main busbar system. The distribution bars are embedded in the multifunction wall (MFW) which is located between the equipment compartment and the busbar compartment.



We have been supplying bespoke electrical switchgear copper solutions for over 20 years. Using EHRT technology enables Flexitech to consistently manufacture high quality and repetitive solutions.



A busbar is a metallic bar or strip—typically copper or aluminum—mounted inside switchgear/switchboards to distribute high currents. Flat profiles maximize surface area for cooling ...



This allows for the distribution of power from a single source to multiple loads, making it an essential component in medium-voltage and high-voltage switchgear. In this blog, we will discuss the ...



1075KWHH ESS

These guidelines govern the busbar processing and installation procedures for all low-voltage switchgear and power distribution enclosures manufactured by our facility.



Flexible and solid busbars made of copper, aluminum or CoppAl® serve as the central distribution board in your switchgear. With our know-how and individual components, we always engineer your system ...



This article explores the role of busbar processing machines in switchgear assembly, detailing their functions, benefits, and the impact they have on the overall quality of switchgear.



Apparatus and method for a modular switchboard provide an adjustable length bus bridge for electrically connecting two adjacent switchboards, where the length of the bus bridge can be...

Contact Us

For more information, pricing, or custom data center solutions, please contact us:

Website: <https://www.yoahorroenergia.es>

Email: hello@yoahorroenergia.es

Phone: +233 54 318 7269

Address: Plot 28, Spintex Road, Accra, Greater Accra, Ghana

This document is for informational purposes only. Specifications subject to change without notice.

