

# Swiss General Cable Tray Installation and Removal



## Swiss General Cable Tray Installation and Removal



These guidelines will be particularly useful for the design, specification, procurement, installation and maintenance of these systems. Cable ladder systems and cable tray systems are designed for use ...



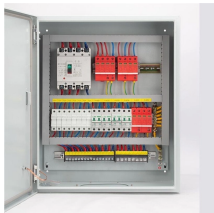
These documents: ANSI/NEMA VE-1, Metal Cable Tray Systems; NEMA VE-2, Cable Tray Installation Guidelines; and NEMA FG-1, Non Metallic Cable Tray Systems, are an excellent industry resource in ...



Step-by-step cable tray and conduit installation method with safety, quality and inspection procedures as per IEEE standards.



Center hung tray supports allow for quicker and easier cable installation by allowing cables to be deposited into tray systems from each side. There is a maximum load capacity per hanger of 318 kg ...



SS F All SS straight lengths and fittings have integral couplers, no separate couplers are needed For SS tray cut to length use fishplates across length-to-length joint, p. 24



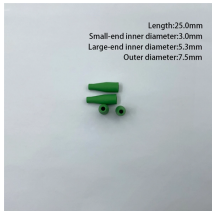
Learn how to install cable trays for large-scale projects with our professional, step-by-step guide covering industry standards, safety protocols, and efficient routing techniques.



Designed to integrate with the existing Swifts cable tray system, Swiftclip can be used with medium (MRF and heavy duty (SRF) in 50 to 300mm widths. The entire system offers excellent earth ...



This method statement covers the site installation of the cable tray & ladders and the requirements of checks to be carried out.



Welcome to our step-by-step guide on installing cable trays! In this video, we'll explore the different types of cable trays available and provide detailed instructions for their...



Welcome to our step-by-step guide on installing cable trays! In this video, we'll explore the different types of cable trays available and provide ...



In designing supports for a cable tray system, consideration should be given to the loads associated with future cable additions and any additional loading that may be applied to the cable tray system (e.g., ...

## Contact Us

For more information, pricing, or custom data center solutions, please contact us:

Website: <https://www.yoahorroenergia.es>

Email: [hello@yoahorroenergia.es](mailto:hello@yoahorroenergia.es)

Phone: +233 54 318 7269

Address: Plot 28, Spintex Road, Accra, Greater Accra, Ghana

This document is for informational purposes only. Specifications subject to change without notice.

