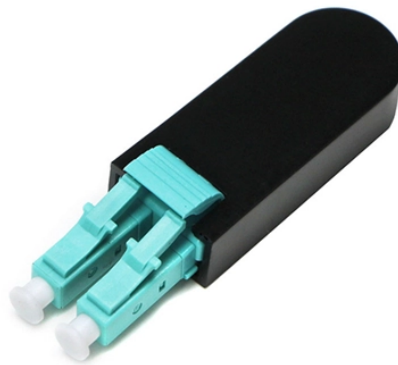


Standard installation height for home electrical distribution boxes



Overview

The proper installation of a distribution box involves placing it at the right height to ensure safety and convenience. This height also safeguards the box from potential. Check for proper IP/NEMA ratings and material quality. Ensure safe placement: install in dry, accessible areas with good ventilation and at appropriate height (typically ~1. Practice good wiring: secure grounding, neat cable management, proper insulation, and correct wire gauge and breaker. The most common question regarding electrical panel installation involves the maximum height allowed for the device. The National Electrical Code (NEC) specifies that the center of the grip of the operating handle of the highest circuit breaker must not be located more than 6 feet 7 inches (2. Standard wall switch height is 4. FIRE ALARM VISUAL ONLY DEVICE OR A COMBINATION AUDIBLE AND 80" TO BOTTOM OF DEVICE OR NOT MORE THAN 96" TO TOP. 54" TO DIAL CENTER (NON-ACCESSIBLE). Ground-mounted foundations should be 50 to 100 mm above ground level.

Standard installation height for home electrical distribution boxes



A standard height of 6"7" off the floor, coupled with a six-inch minimum clearance around the sides of the panel, ensures that safety and operational efficiency are optimized.



In homes, the best height for installation is about 1.5 meters from the floor — it's easy to reach and out of children's reach. In industrial settings, you may need to adjust the height depending ...



The height of the bottom of the box should not be less than 1.0m from the ground, and measures should be taken to prevent climbing. All the distribution boxes should be good protected ...



Most Pros follow the industry standard for common residential measurements, even when not required by electrical codes: Standard wall receptacle height is 1 foot from the top of the flooring ...



In this article, we will explore the specifications for household distribution boxes and provide guidance on how to install them correctly. Specifications of Household Distribution Boxes



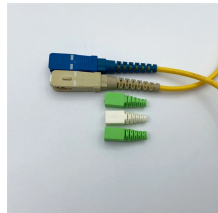
If the height of the electrical equipment is less than 6.5 feet, but when mounted, the top of the equipment exceeds 6.5 feet, the minimum workspace height shall be equal to the height of the equipment.



This document represents the minimum requirements and specifications for the installation of an electrical underground residential distribution system to be transferred to Oncor Electric Delivery ...



ALL DISTRIBUTION PANELS AND PANEL BOARDS SHALL BE LABELED ON THE PANEL CABINET WITH THE PANEL NAME AND THE POWER SOURCE FEEDING THE PANEL AS PER THE ...



For the vertical clearance, often called headroom, the space must be clear from the floor up to a minimum height of 6 feet 7 inches (2.0 meters) or the height of the equipment, whichever is ...



Install a distribution box at 4.5 to 5.5 feet high for safety, accessibility, and compliance. This height ensures easy use and protection from hazards.



For the vertical clearance, often called headroom, the space must be clear from the floor up to a minimum height of 6 feet 7 inches (2.0 meters) or the height of the equipment, whichever is ...

Contact Us

For more information, pricing, or custom data center solutions, please contact us:

Website: <https://www.yoahorroenergia.es>

Email: hello@yoahorroenergia.es

Phone: +233 54 318 7269

Address: Plot 28, Spintex Road, Accra, Greater Accra, Ghana

This document is for informational purposes only. Specifications subject to change without notice.

