

# **Standard Size of Low-Voltage Indoor Distribution Box**



## Standard Size of Low-Voltage Indoor Distribution Box



Most LV distribution paneling operates at 230/400 V or 277/480 V, with many systems rated up to 600 V. Inside the enclosure, the LV board handles power distribution and adds overload ...



Choosing a low-voltage power distribution cabinet is similar to choosing GIS, but the focus is on load capacity, safety, and adaptability for low-voltage systems (typically  $\leq 1,000$  V).



This guide explains standard electrical box dimensions by type, compares common sizes, and helps you select the right box for residential, commercial, and light industrial applications.



Design requirements for low voltage distribution boxes cover NEC, IEC, and safety standards to ensure reliable, compliant electrical installations.



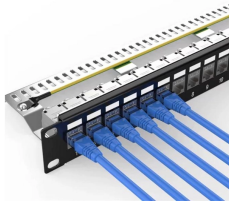
Electrical control panels and distribution boxes are the backbone of modern electrical systems. From powering homes and industrial facilities to supporting medium-voltage infrastructure, ...



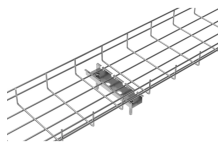
Product Breakdown alfanar switchgear is precisely sized to meet your requirements and budget. Each main distribution board provides a ready to use optimized solution, designed to the exact size and ...



Advancement in technology has resulted in smaller size, better performance and improved design. BAHRA Load Centers are used for safe and reliable distribution of electrical power for indoor ...



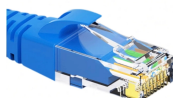
This is my guide to provides a step-by-step method for installers to calculate the appropriate low-voltage box size for various communications, alarm, surveillance, and networking...



The ABB-MNS® distribution board and power cabinet are of a welded structure. The product comes in a good variety of shapes, and is highly versatile, structurally innovative, and mechanically rigid. Its ...



Design requirements for low voltage distribution boxes cover NEC, IEC, and safety standards to ensure reliable, compliant electrical installations.



The distribution section accommodates a minimum of 14 three-pole breakers ("21X" of circuit breaker distribution space; 1X = 1-3/8 inch). The panel section has provisions to accept breakers to a ...

## Contact Us

For more information, pricing, or custom data center solutions, please contact us:

Website: <https://www.yoahorroenergia.es>

Email: [hello@yoahorroenergia.es](mailto:hello@yoahorroenergia.es)

Phone: +233 54 318 7269

Address: Plot 28, Spintex Road, Accra, Greater Accra, Ghana

This document is for informational purposes only. Specifications subject to change without notice.

