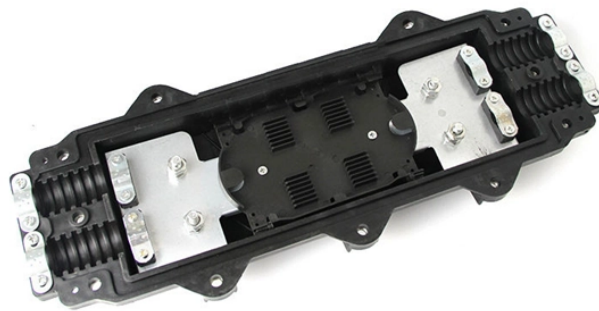


# Spectrometer Calibration in Luxembourg



## Overview

This calibration utility computes the wavelengths and resolution of your spectrometer at each data point of the uploaded calibration spectrum. SPECTRO is one of the worldwide leading suppliers of analytical instruments, employing optical emission (stationary and mobile Arc/Spark OES, ICP-OES) and X-ray fluorescence spectrometry (XRF) technology. Our experienced team adjusts spectrophotometers so our. Dirk Van Der Ploeg has over 33 years of experience in the automotive industry related to: Quality Management Systems Leading the process of getting accredited to ISO 17025 of several test laboratories including implementation of measurement uncertainty estimations and training of personnel. Our ISO/IEC 17025:2017 accredited, National Institutes of Technology (NIST) traceable Spectrophotometer Calibration services will ensure that your instruments can be trusted for accuracy and repeatability. Chemical, physical, biological, environmental, and.

## Spectrometer Calibration in Luxembourg



Along with our other calibration services, Applied Technical Services also offers spectrophotometer calibration services. Our experienced team adjusts spectrophotometers so our clients get the best ...



If you need to maintain the accuracy of your instruments, then you need Spectrophotometer Calibration services from ACS Calibration. Our Spectrophotometer Calibration processes ensure that your ...



Leading safety of testing facilities focussing on involvement of all associates, leading by example and striving to zero accidents.



Le BLM est le seul organisme au Luxembourg qui peut réaliser l'étalonnage des horloges par rapport à UTC. Les connexions se font sur demande au BLM, qui fournit un accès dédié aux demandeurs pour ...



This article will discuss the value of calibrating a spectrometer, the calibration procedure, and the methods utilized to get precise spectrum reading.



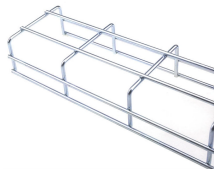
Europe Métrologie est spécialisé dans l'étalonnage et la vérification d'appareils de mesure sur site, au Luxembourg, en France, en Belgique et en Allemagne.



We have been performing factory calibrations for spark spectrometers for several decades. Since March 2024, our laboratory for OES (optical emission spectrometry) has been accredited in accordance ...



Visit our Knowledge base section where you will find out more about the supported calibration gas-discharge sources and their emission lines. If none of these calibration sources fits your needs, you ...



Europe Métrologie est spécialisé dans l'étalonnage et la vérification d'appareils de mesure sur site, au Luxembourg, en France, en Belgique et en Allemagne.



Europe Métrologie c'est plus de 25 ans d'expérience en étalonnage et vérification de vos appareils de mesure, sur site ou en laboratoire.

## Contact Us

For more information, pricing, or custom data center solutions, please contact us:

Website: <https://www.yoahorroenergia.es>

Email: [hello@yoahorroenergia.es](mailto:hello@yoahorroenergia.es)

Phone: +233 54 318 7269

Address: Plot 28, Spintex Road, Accra, Greater Accra, Ghana

This document is for informational purposes only. Specifications subject to change without notice.

