

Specified dimensions of elevator electrical distribution box



Specified dimensions of elevator electrical distribution box



Explore NEC Article 620 on elevator electrical safety standards, conductor requirements, and feeder demand factors. Continuing Education for elevator professionals.



MBT-MS-Y 380V Elevator Power Distribution Box In Machine Room ...



Ensure three key details align: (1) the power box's input voltage range (typically 380V/400V three-phase AC) matches the building's electrical system, (2) the output voltage/current ratings support the ...



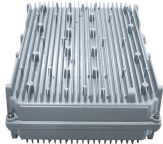
Explanation-The 240VAC feed should have a black, red, white, and ground wire to the machine room. All electrical contractors will have full knowledge of this requirement. Simply insure they are aware of ...



General Technical Particulars for LT Distribution Boxes : - The L.T. Distribution Boxes should be of the dimensions as per the drawing & details in the table furnished.



Special cabinets can be provided at an additional charge. The box dimensions shown are inside dimensions. For outside dimensions, add 0.25-inch (6.4 mm). Standard panelboard boxes are ...



The document outlines specifications for elevator electrical requirements, including general specifications, electrical equipment specifications, control requirements, safety provisions, and ...



Distribution Boxes shall have Isolator (Switch Disconnect) on incoming circuit and Porcelain CUTOFF fuse base disconnect on outgoing circuits with necessary interconnecting Bus Bars.



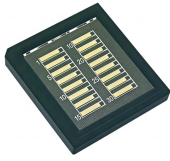
MBT-MS-Y 380V Elevator Power Distribution Box In Machine Room ... Categories: Elevator Modernization, Modernized Others Tags elevator part use in machine room, elevator Power ...



The size and number of elevators required for a building depends upon the function of the building, size, layout, and the physical location and grouping of elevators.



Provide shunt-trip fused distribution panel with fused disconnect switches (with or without shunt-trip) and an accessory control enclosure with all necessary relay(s), control transformer and other options for ...



Eaton's Elevator Control panelboards provide electric power distribution with integrated fusible switches, metering, and surge protection. Additionally, they're designed to meet UL 67 and NEMA PB1 ...

Contact Us

For more information, pricing, or custom data center solutions, please contact us:

Website: <https://www.yoahorroenergia.es>

Email: hello@yoahorroenergia.es

Phone: +233 54 318 7269

Address: Plot 28, Spintex Road, Accra, Greater Accra, Ghana

This document is for informational purposes only. Specifications subject to change without notice.

