

Specifications of Galvanized Special-Shaped Cable Trays



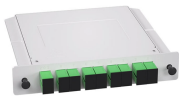
Overview

Hot dip Galvanized (ISO 1461, IS 2629, IS:4759). The average mass of zinc deposited should be 395 grams per square meter of surface area and thickness should be more than 55 micron. Cable tray systems are defined to include, but are not limited to straight sections of [ladder type] [trough type] [solid bottom type] [channel type] cable trays, bends, tees, elbows, drop-outs, supports and accessories. ANSI/NFPA 70 - National Electrical Code. ASTM A123 - Specification. nd accessories as defined in the latest NEMA standards per NEMA VE-1. All cable trays to be labeled All trays to be hot-dipped galvanized in accordance with ASTM A123. The mechanical and electrical characteristics, tests, certifications, overall quality management, recommendations mentioned. Browse our T&B galvanized metallic cable tray systems. More adaptable and easier to maintain than conduit pipe, ideal for evolving wiring needs. Hubbell Wiring Device-Kellems and Hubbell Premise Wiring are divisions of Hubbell Incorporated, a U. This zinc coating is easily deformed.

Specifications of Galvanized Special-Shaped Cable Trays



The Ladder Tray features light, rugged, tubular steel construction. It is designed for mechanical support and strain relief in long runs of cable and creates a smooth gradual bend for cable. Rail and stringer ...



The drawings which constitute a part of these specifications indicate the general route of the cable tray systems. Data presented on these drawings is as accurate as preliminary surveys and planning can ...



When fitting cable trays and their accessories, the products are cut on site to create changes of direction, adjust sections, etc. Damage can also occur during handling; as a result, both the ...



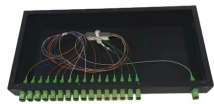
HDG Cable Tray Specification with Self-Healing Zinc Coating - Free download as Word Doc (.doc / .docx), PDF File (.pdf), Text File (.txt) or read online for free. ...



Splice plates. Splice plates shall be supplied with the straight sections of the tray and are installed with four sets of nuts/bolts that are also supplied. Splice plates fit internally to the tray and are one-piece ...



Maximize durability and safety with our professional buyer's guide. Learn how to select the right galvanized cable trays for industrial environments, ensuring long-term corrosion resistance.



Due to its unique composition it offers a self healing property on cut edges. HRCA (Hot Rolled and Close Annealed): Trays are made of hot roll steel which shall meet IS2062 standard. CRCA (Cold Rolled ...



Typical GA drawing with dimensional details of offered cable tray & accessories shall be submitted with the bid.



Browse our T& B galvanized metallic cable tray systems. More adaptable and easier to maintain than conduit pipe, ideal for evolving wiring needs.



Hot-dip galvanized (EN ISO 1461) DG (dipped-galvanised) Whenever cable support systems are exposed to the elements and/or caustic substances (such as petrochemical applications), they are ...



Straight sections of solid bottom cable trays constructed from single sheet of metal, providing excellent protection from external damage. They are used primarily for intrumental control, ...

Contact Us

For more information, pricing, or custom data center solutions, please contact us:

Website: <https://www.yoahorroenergia.es>

Email: hello@yoahorroenergia.es

Phone: +233 54 318 7269

Address: Plot 28, Spintex Road, Accra, Greater Accra, Ghana

This document is for informational purposes only. Specifications subject to change without notice.

