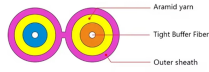


Specifications and Models of Optical Cable Circular Joint Boxes



Specifications and Models of Optical Cable Circular Joint Boxes



As the world's largest producer of telecoms cables, supporting the infrastructures of many of the world's leading telecoms operators, Prysmian delivers optical fibre and copper cabling solutions that help link ...



Discover the technical specifications, production process, and key applications of a joint box for optical fiber cable. Learn about its performance, durability, and role in efficient fiber optic network installations.



Features & Technical Specification Features
Logical design, waterproof structure, easy installation, convenient maintenance Fibre Optic Cable Joint Enclosure for up to 48 fibers.



7.3.4 INITIAL EXAMINATION: The cable joint box shall be assembled with all its components like rubber sealing etc. and a continuous cable passing through it as per the relevant procedure.



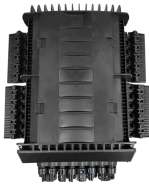
Fibre optic metal joint box/joint closure/splice closure is used for the continuation of the optical cable in the middle of the tower, which has the advantages of high mechanical strength, good sealing ...



RLB is a preferred supplier of wire & cable materials and a reliable provider of stranding machine, systems and solutions. Our representative products are wire stranding machine, bunching ...



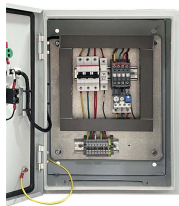
The document details the parts, materials, and quantities of a joint box for OPGW-OFC-OFC-OFC cables on a tower. 2. It includes 10 parts such as a joint box cover, adapter, fiber coiling sheet, and ...



Features & Technical Specification Features Logical design, waterproof structure, easy installation, convenient maintenance Fibre Optic Cable Joint Enclosure for ...



Fiber optic splice closure/box, with metal hoop, dome, vertical type, 2 (4x16mm) inlet or outlet ports, 1~4 trays for bunch fiber. For bunch fiber - 037 tray (110*93mm) with 12 cores and heat shrinkable ...



Explore top-quality OPGW hardware fittings, setting a new standard for secure and efficient connections in our Pole Line Hardware.



The GPJ09-9401 round joint box can handle 12, 24 or 36 optical splices. It is suitable for various installation scenarios.



Fibre optic metal joint box/joint closure/splice closure is used for the continuation of the optical cable in the middle of the tower, which has the advantages of high ...

Contact Us

For more information, pricing, or custom data center solutions, please contact us:

Website: <https://www.yoahorroenergia.es>

Email: hello@yoahorroenergia.es

Phone: +233 54 318 7269

Address: Plot 28, Spintex Road, Accra, Greater Accra, Ghana

This document is for informational purposes only. Specifications subject to change without notice.

