

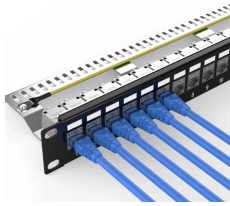
# Spacing of roof waterproofing cable tray supports



## Overview

Cable Management Tray Size: Choose a tray size that will hold the desired amount and length of cable. The PHP Cable Tray Support is designed for cable systems of various widths at most specified heights above the roof surface. Insert legs of duct support into bases and attach with 2-1/2" bolt and 1/2" nut. The National Electrical Code is a set of principles designed to promote public safety and welfare, as well as safeguard public health by regulating the design and operation of electrical facilities and. Understanding cable tray spacing is key to meeting safety regulations and maintaining system performance. The spacing between trays, whether horizontal or vertical, depends on various factors like cable type, environment, and tray material. Proper installation can significantly reduce. When developing our cable support OBO can offer reliable solutions for systems, three attributes are at the routing and fastening cables securely core of what we do: efficiency, resil- for each of these installation challeng-ience and safety.

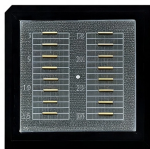
## Spacing of roof waterproofing cable tray supports



Each support consists of two Roof-Pro TAB bases, with an open-channel beam at widths of either 500mm, 750mm or 1000mm. When it comes to the largest runs of cable tray and ladder, we would ...



Cable Tray Support Span: The distance between supports is a critical calculation. The cable tray support span must be determined based on the manufacturer's load capacity chart and the total anticipated ...



Commonly called the Load Class, this defines the load-carrying capability of the tray for a specific support span distance. The design and cost of the cable tray is greatly affected by this designation.



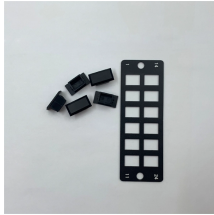
A key factor for the load capacity of the cable trays is (in addition to the support spacing and slant height) the material thickness, which varies according to type.



Our wind certification report provides you with list of acceptable B-Line series cable tray supports, fittings and covers based off of the environmental conditions, cable loading, and type of cable tray in your ...



As per the NEC, the maximum allowable rung spacing is 9 inches (230 mm) when cable tray carries single-conductor cables of 1/0 to 4/0 AWG (American Wire Gauge) (Appendix I).



Support spacing for cable trays must align with the manufacturer's instructions, as outlined in NEC 392.30 (A). Generally, standard trays require supports every 6 to 10 feet, while ...



Discover the essential cable tray spacing requirements for safe and efficient installation. Learn key standards, horizontal and vertical spacing, and more.



Explore the essential cable tray support spacing requirements for safe and efficient installations. Learn NEC guidelines for perforated, ladder, and wire mesh trays.



Make sure duct and duct supports are level, both vertically and horizontally, and proper spacing is maintained per design specifications. Check that the weight of the ducting is distributed evenly ...

## Contact Us

For more information, pricing, or custom data center solutions, please contact us:

Website: <https://www.yoahorroenergia.es>

Email: [hello@yoahorroenergia.es](mailto:hello@yoahorroenergia.es)

Phone: +233 54 318 7269

Address: Plot 28, Spintex Road, Accra, Greater Accra, Ghana

This document is for informational purposes only. Specifications subject to change without notice.

