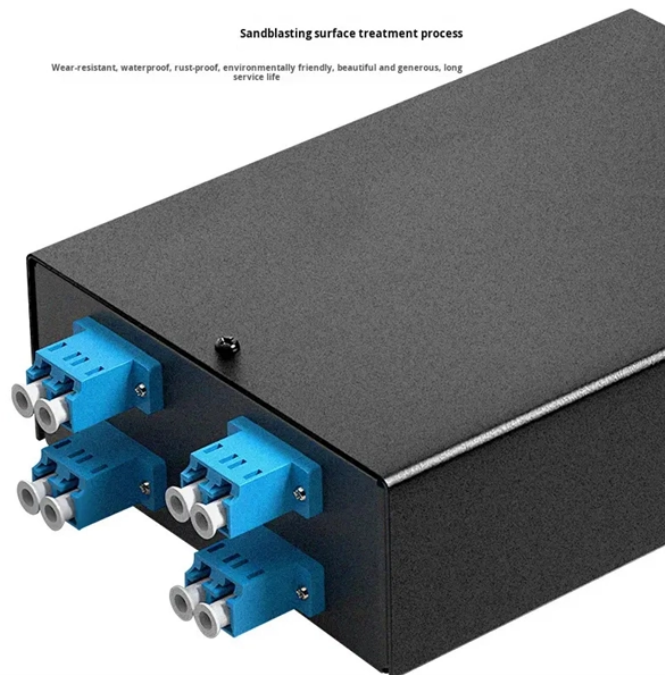


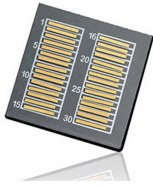
## Spacing between the ground level of the main distribution box



### Overview

The National Electrical Code provision 110. 26 clarifies that electrical boxes must be supplied with at least 3 feet of free space surrounding them for safety measures. 26, these rules define the minimum Spaces about electrical equipment necessary for workers to perform tasks like inspection, maintenance, and replacement safely. The core components of this standard involve the Depth of working space, which varies based on the system's. The National Electrical Code (NEC) provides comprehensive safety standards for electrical installations, including requirements for electrical panels (main service panels and subpanels or breaker box). NEC Article 408 covers switchboards, switchgear, and Panelboards installation and applications.

## Spacing between the ground level of the main distribution box



This paper will review some of the NEC requirements regarding required electrical space and discuss new product concepts serving to reduce equipment size, resulting in reduced space requirements, ...



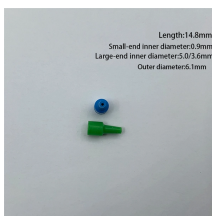
The neutral and ground must be separated at sub-panels but bonded using jumper wire at the main service panel. Grounding electrodes (e.g., ground rods) must be used, and a grounding conductor ...



The working space must extend at least 36 inches deep, measured outward from the front of the panel. That 36-inch figure applies to equipment rated up to 150 volts to ground under the ...



A visual guide to NEC 110.26 working space requirements. Understand the required depth, width, and height clearances for panels, switchgear, and transformers.



The National Electrical Code provision 110.26 clarifies that electrical boxes must be supplied with at least 3 feet of free space surrounding them for safety measures.



Article 110.26 in the 2014 National Electrical Code (NEC) contains specifications for the working space dimensions required around all electrical equipment. This working space also shall be maintained to ...



These distances indicate space that must be clear to the floor. The chart above illustrates the varying requirements for the depth of the working space in the electrical room based on existing conditions.



The dedicated equipment space is commonly referred to as the equipment footprint (the space equal to the width and depth of the equipment). The dedicated equipment space also extends from the floor to ...



NEC Requirements: A detailed explanation of the specific clearance and working space requirements as per the latest NEC. Examples: Practical examples and scenarios showing the ...



The work space shall be clear and extend from the grade, floor, or platform to a height of 2.0 m (6 1/2 ft) or the height of the equipment, whichever is greater.

## Contact Us

For more information, pricing, or custom data center solutions, please contact us:

Website: <https://www.yoahorroenergia.es>

Email: [hello@yoahorroenergia.es](mailto:hello@yoahorroenergia.es)

Phone: +233 54 318 7269

Address: Plot 28, Spintex Road, Accra, Greater Accra, Ghana

This document is for informational purposes only. Specifications subject to change without notice.

