

# **South Africa inquiry for bend-insensitive fiber optic cable G 652D**



## South Africa inquiry for bend-insensitive fiber optic cable G 652D



ClearCurve bend-insensitive fibers are compliant with ITU-T Recommendations G.652.D and G.657, providing superior installation speed and efficiency, and ...



Today, essentially all MM fiber is bend-insensitive and non-BI fiber is difficult to find. When the compatibility of BI and non-BI MM fiber was being questioned, testing standards for MM fiber were ...



Bend-insensitive fiber optic cables have become increasingly important in modern telecommunications and networking systems. These cables are designed to minimize signal loss and ...



The main characteristic of this type of fiber is its excellent bending resistance, which achieves a bending radius of 1/4 to 1/2 of the conventional G.652 fiber.



ClearCurve bend-insensitive fibers are compliant with ITU-T Recommendations G.652.D and G.657, providing superior installation speed and efficiency, and greater successful installations in homes and ...



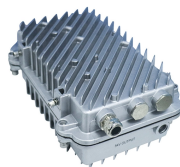
Characteristics of a single-mode optical fibre and cable Summary Recommendation ITU-T G.652 describes the geometrical, mechanical and transmission attributes of a single-mode optical ...



Bend-insensitive fiber (BIF) is fiber optic cable that doesn't lose transmission power even when bent beyond its average radius. The cable has an extra layer of material around its core that ...



Discover the benefits of bend-insensitive fiber for reducing stress and bending loss in optical fiber. Learn about its design, applications, and compatibility with conventional fiber cable.



Bend-insensitive single mode fibres (ITU-T G.657.A1 and G.657.A2) are a crucial part of the world's shift towards flexible and reliable connectivity. They are the only fibres capable of securing the whole fibre ...



CommScope designs and manufactures a comprehensive line of fiber optic cables—from outside plant to indoor/outdoor and fire-rated indoor fiber cables.



Huihongfiber is your best factory partner for bend insensitive fiber cable solutions. We have full ranges of single mode G657 and Multimode G651.1 bendable fibers and cable assemblies for your OEM ...

## Contact Us

For more information, pricing, or custom data center solutions, please contact us:

Website: <https://www.yoahorroenergia.es>

Email: [hello@yoahorroenergia.es](mailto:hello@yoahorroenergia.es)

Phone: +233 54 318 7269

Address: Plot 28, Spintex Road, Accra, Greater Accra, Ghana

This document is for informational purposes only. Specifications subject to change without notice.

